

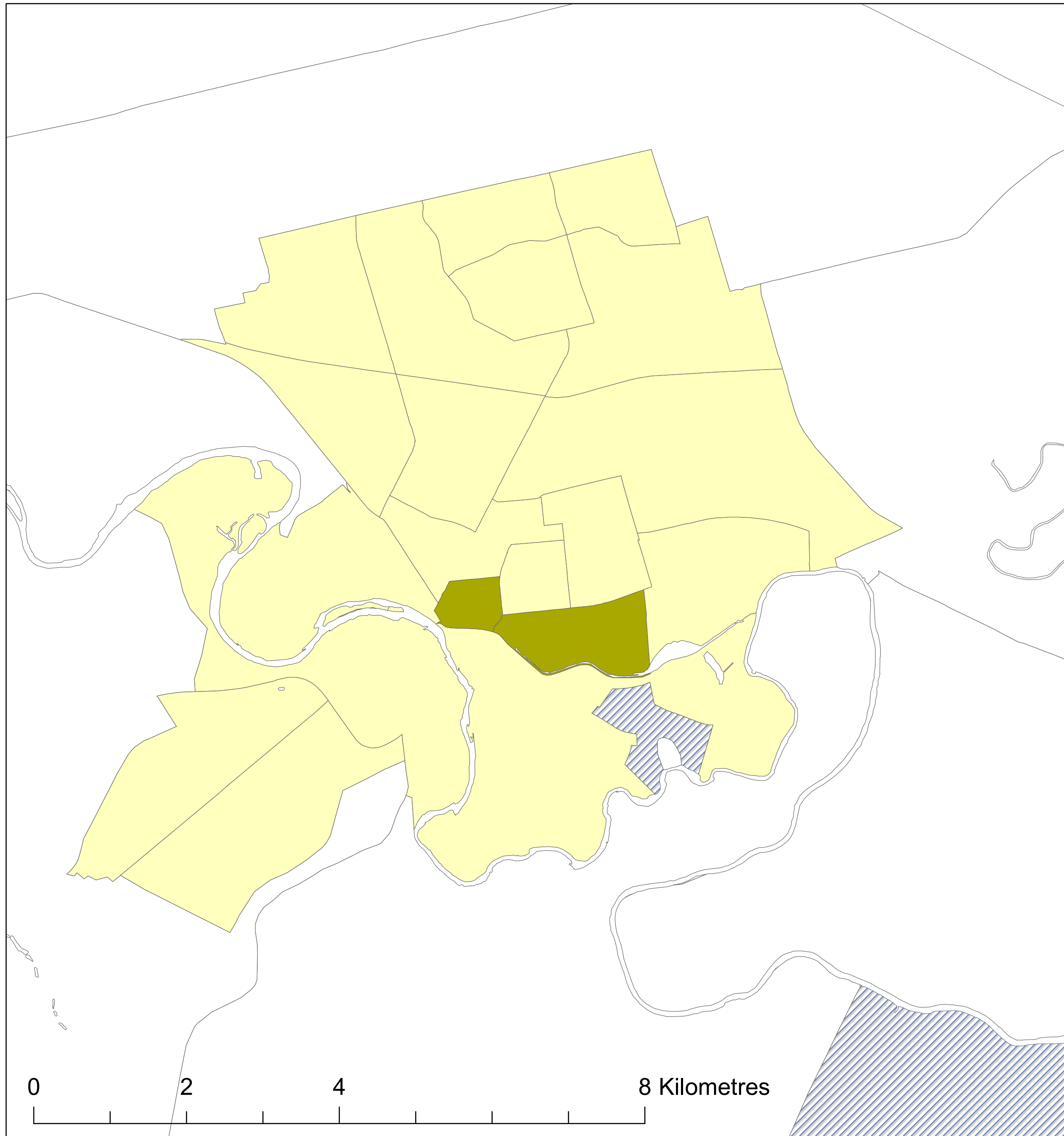
Brantford

Transportation T9 Method

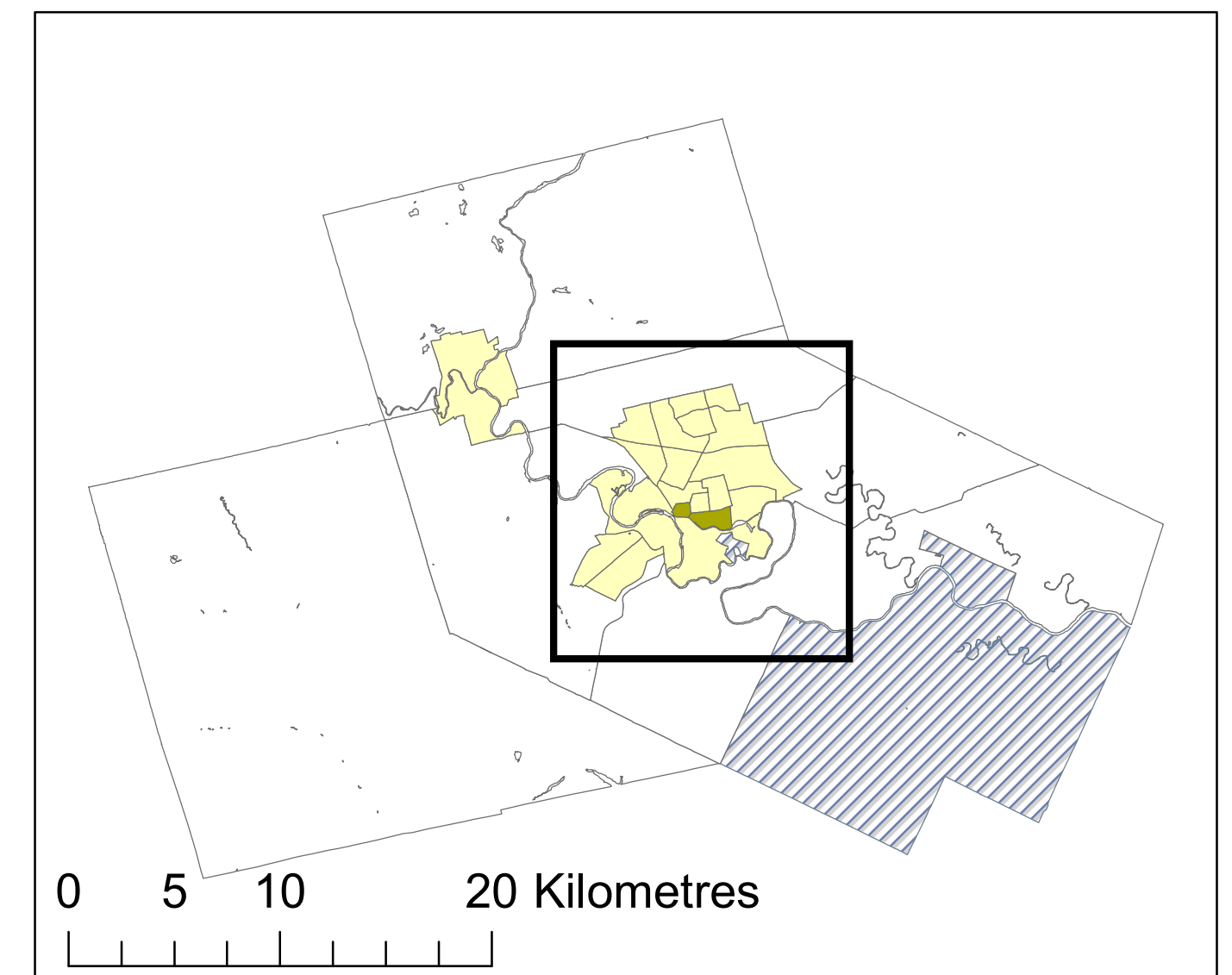
Legend

- Active Core
- Auto Suburb
- Exurban
- Unclassified

Active Core: 3%
Auto Suburb: 78%
Exurban: 19%



Census Tracts and Population Data: 2016 Census
Census Tract Classification: 2016



Queen's School of Urban and Regional Planning
Principal Investigator: David Gordon
Research Assistants: Lyra Hindrichs, Chris Willms,
Ben McCauley & Shuhong Lin

