

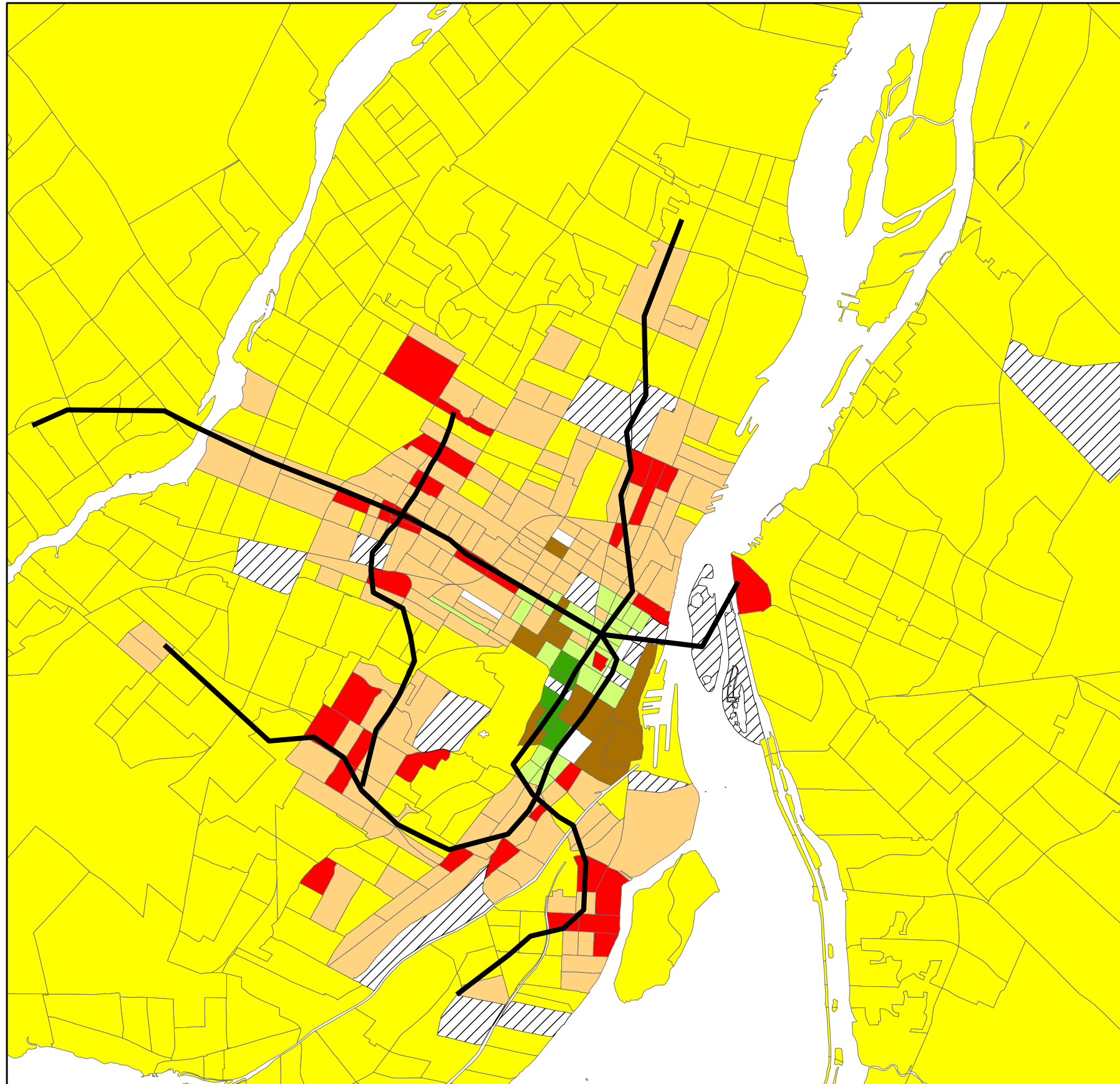
Montreal

Journey to Work by Dominant Mode of Transportation

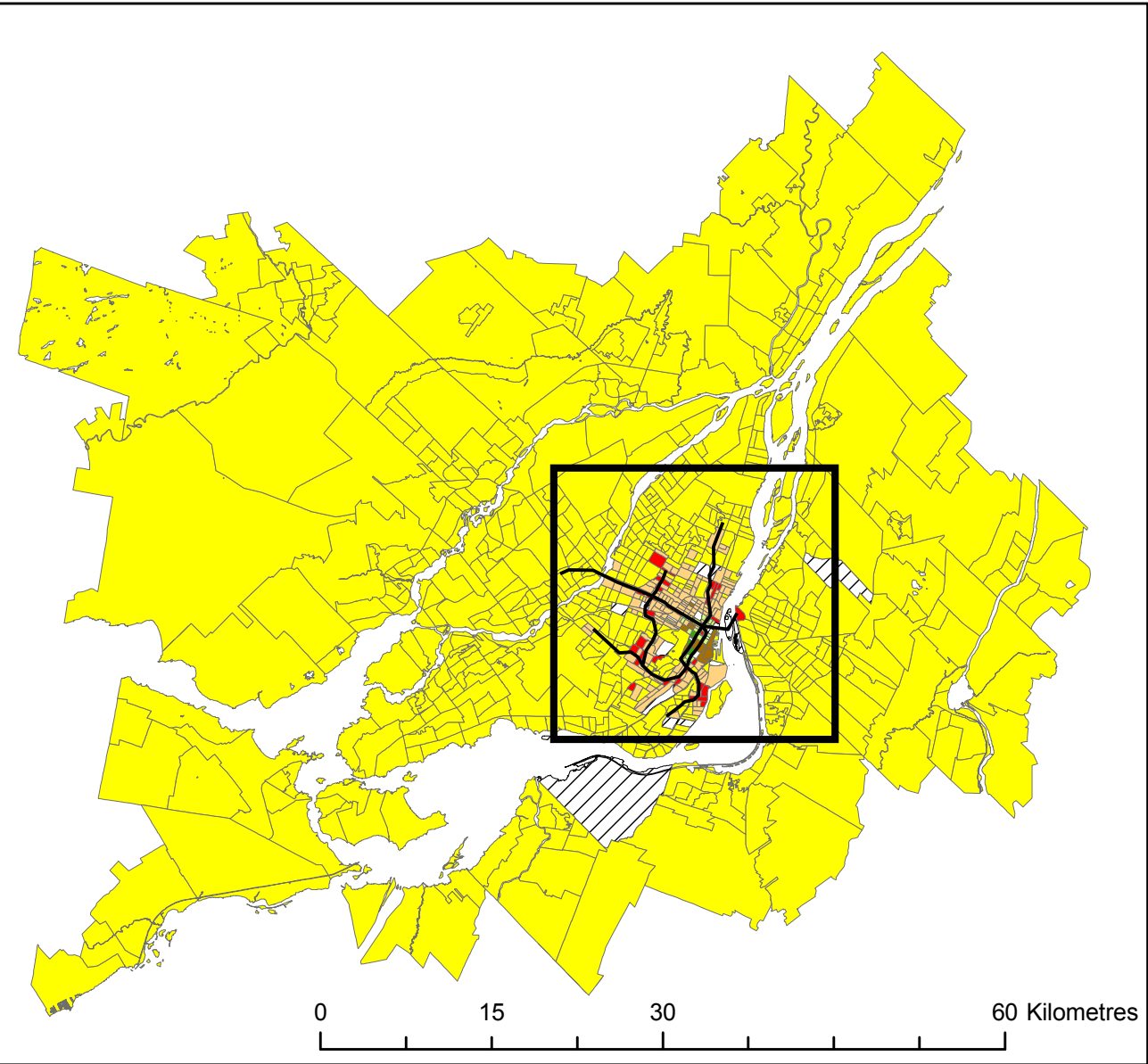
Statistics Canada | 2006 Census

Julien Sabourault, Research Assistant

Queen's University School of Urban and Regional Planning.
Principal Investigator David Gordon



0 3 6 12 Kilometres



Legend

- | | |
|-----------------------|--|
| subway | Predominately Automobile and Public Transit |
| Active Transportation | Predominately Active Transportation and Public Transit |
| Public Transit | Predominately Active Transportation and Automobile |
| Automobile | not classified |