

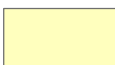



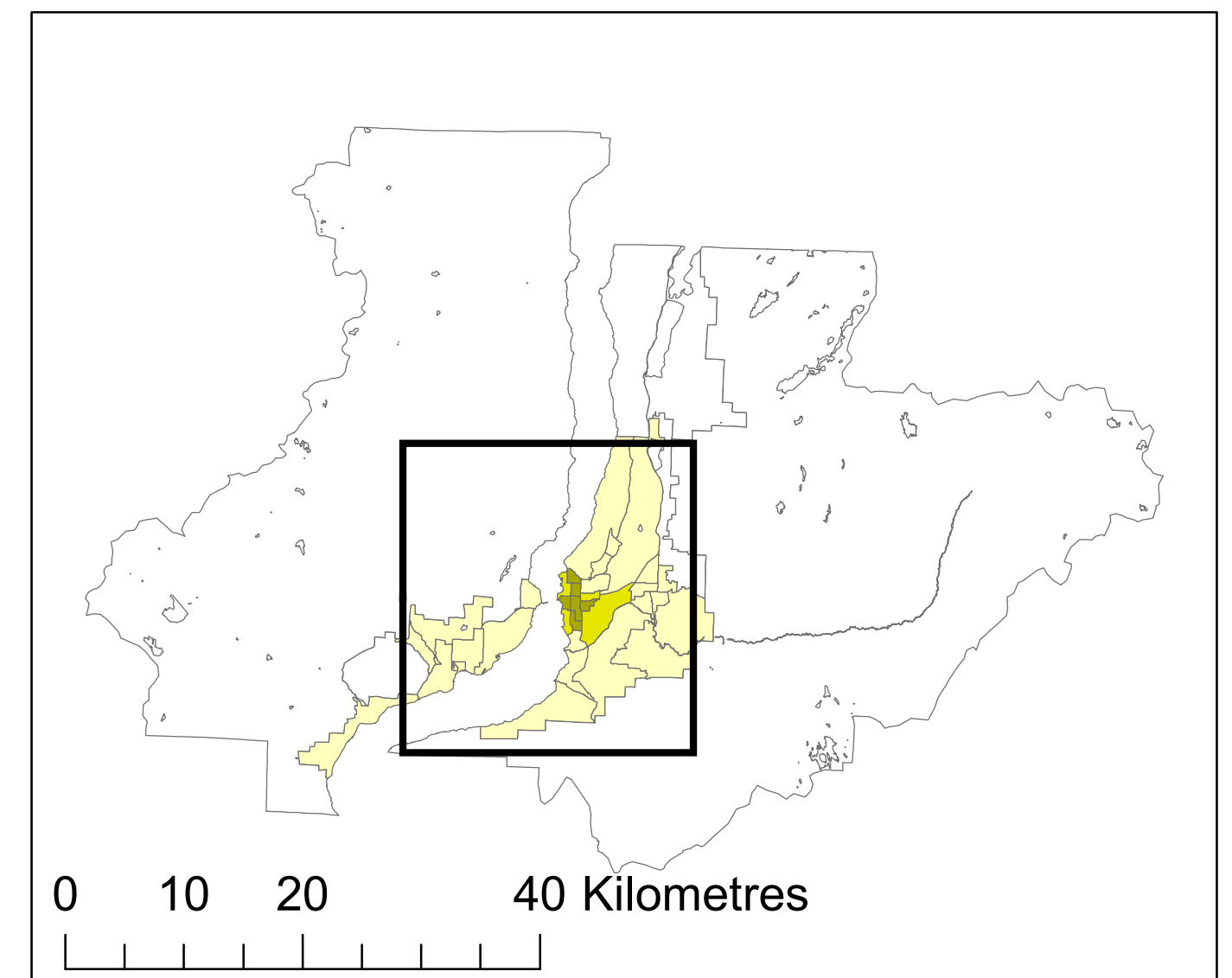
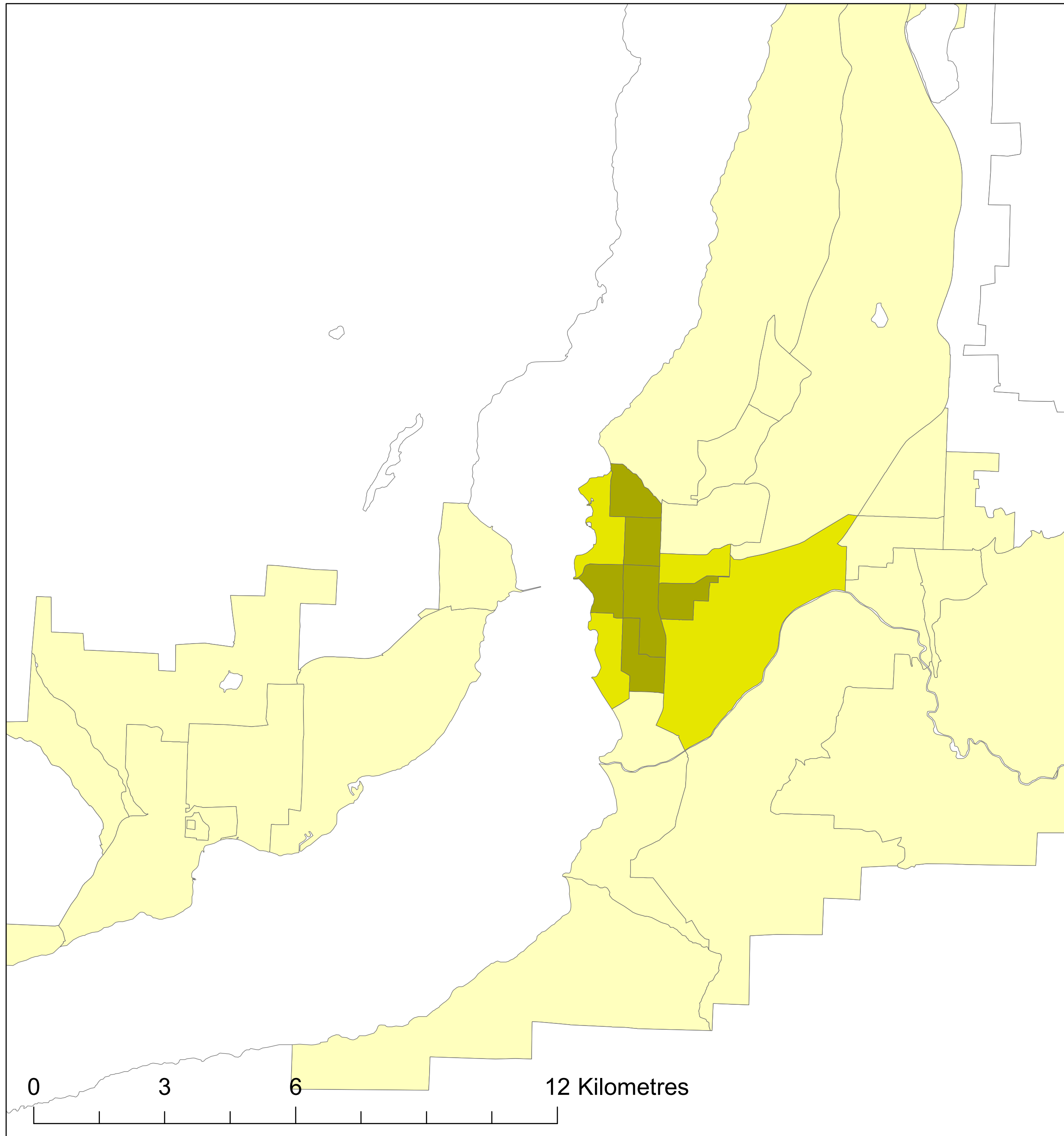
# Kelowna

*Transportation T9 Method*

## Legend

	Active Core	Active Core: 10%
	Transit Suburb	Transit Suburb: 8%
	Auto Suburb	Auto Suburb: 68%
	Exurban	Exurban: 14%

Census Tracts and Population Data: 2016 Census  
Census Tract Classification: 2016



Queen's School of Urban and Regional Planning  
Principal Investigator: David Gordon  
Research Assistanst: Chris Willms & Lyra Hindrichs

