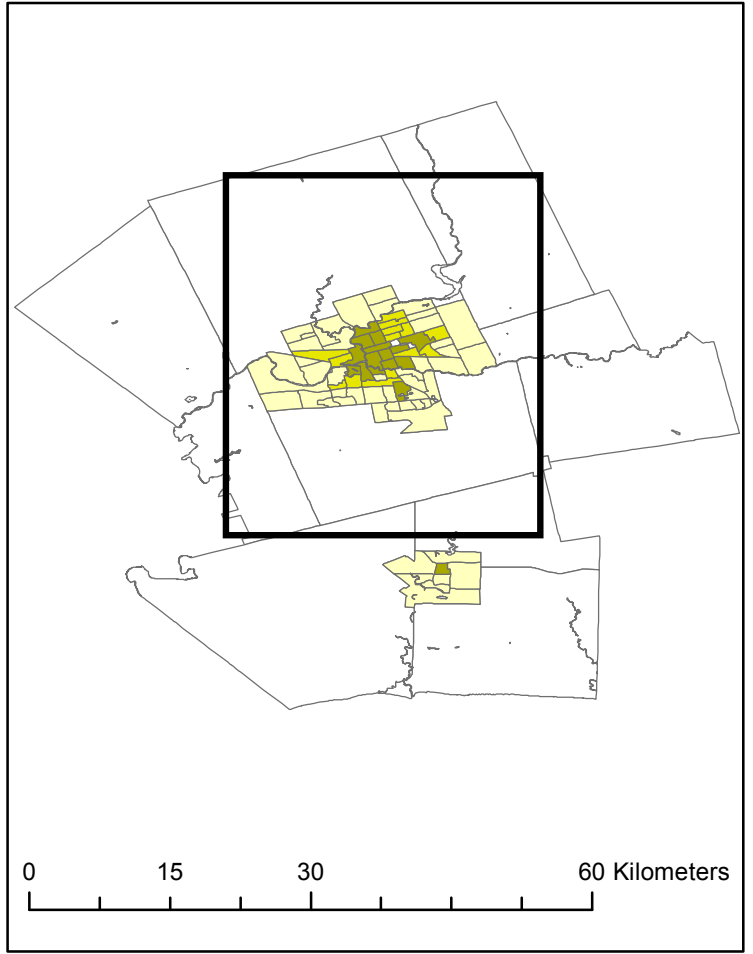
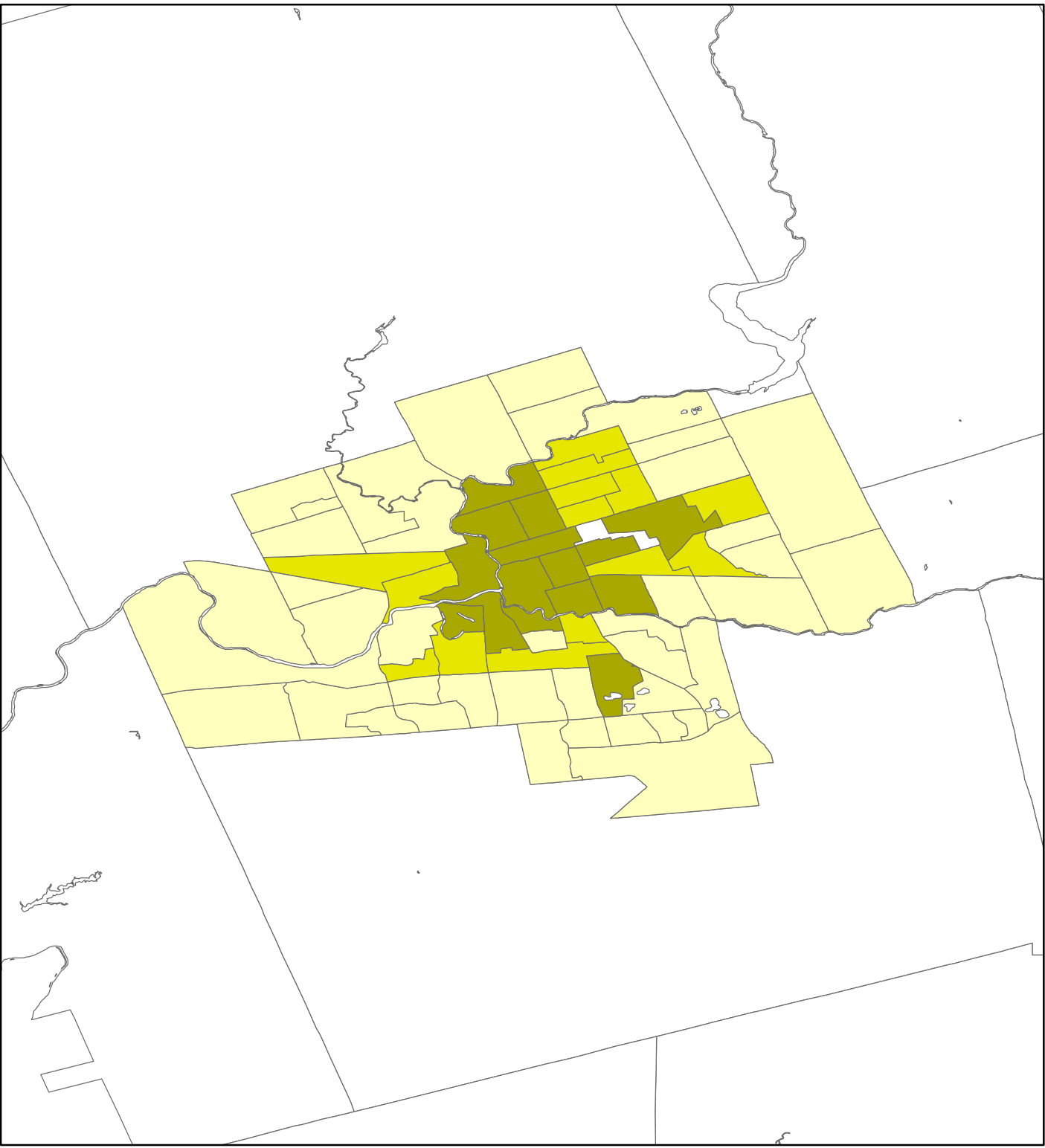


# London

**Legend** Active Core 18%, Suburban 71%, Exurban 11%

- Active Core
  - Transit Suburb
  - Auto Suburb
  - Exurban
- Transportation Method T8
- Statistics Canada | 1996 Census  
Mehdi Bouhadi, Research Assistant



0 15 30 60 Kilometers

0 3 6 12 Kilometers

