



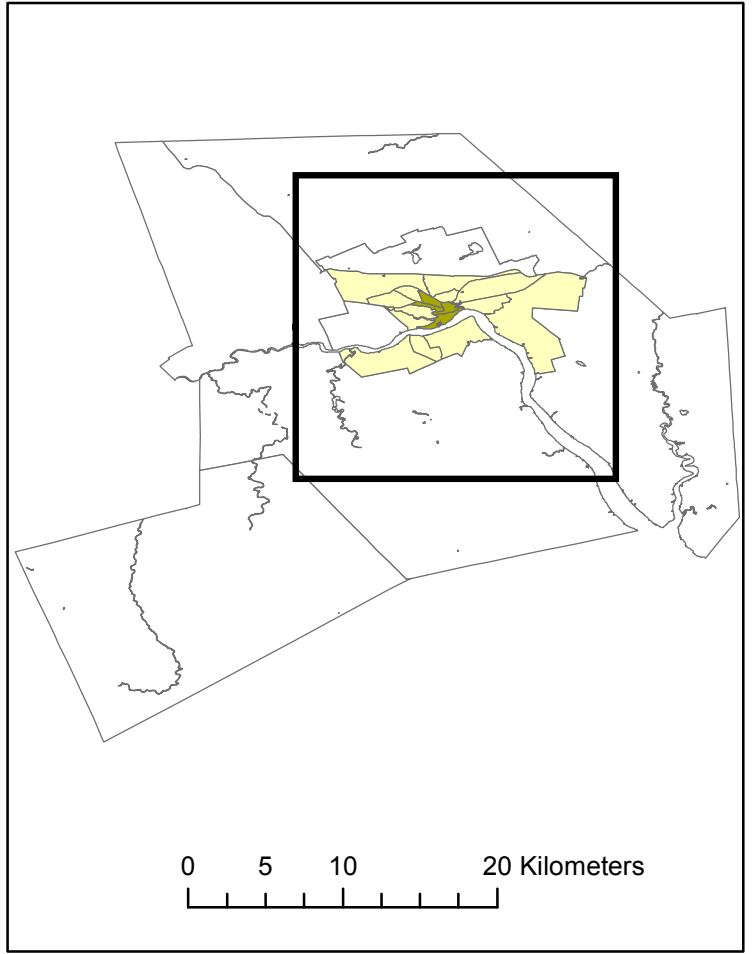
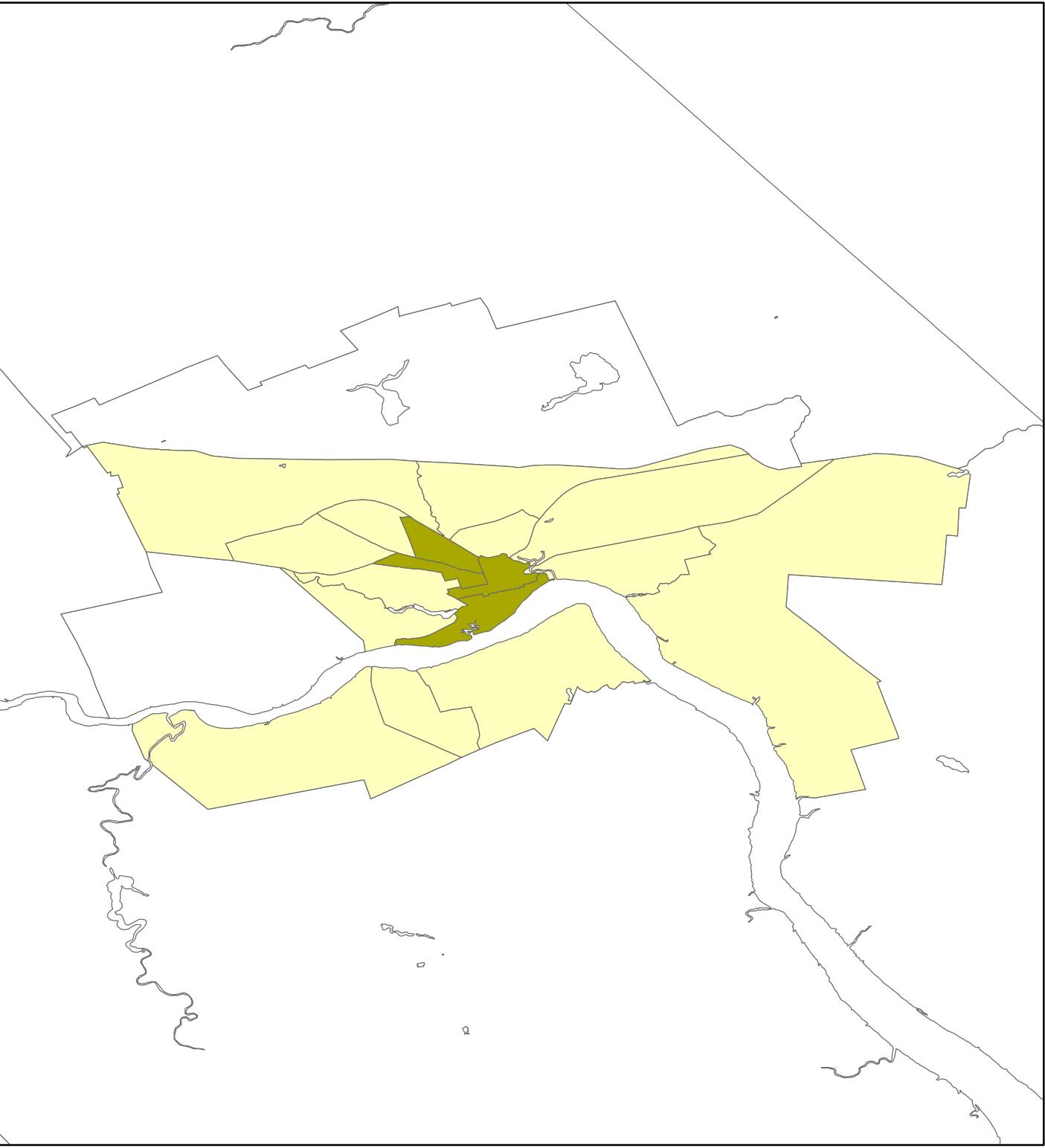


# Moncton

**Legend** Active Core 17%, Suburban 54%, Exurban 29%

-  Active Core
  -  Transit Supportive Suburb
  -  Auto Suburb
  -  Exurban
- Density Method D4**
- Statistics Canada | 1996 Census  
Mehdi Bouhadi, Research Assistant



0 5 10 20 Kilometers

0 3 6 12 Kilometers

N

