





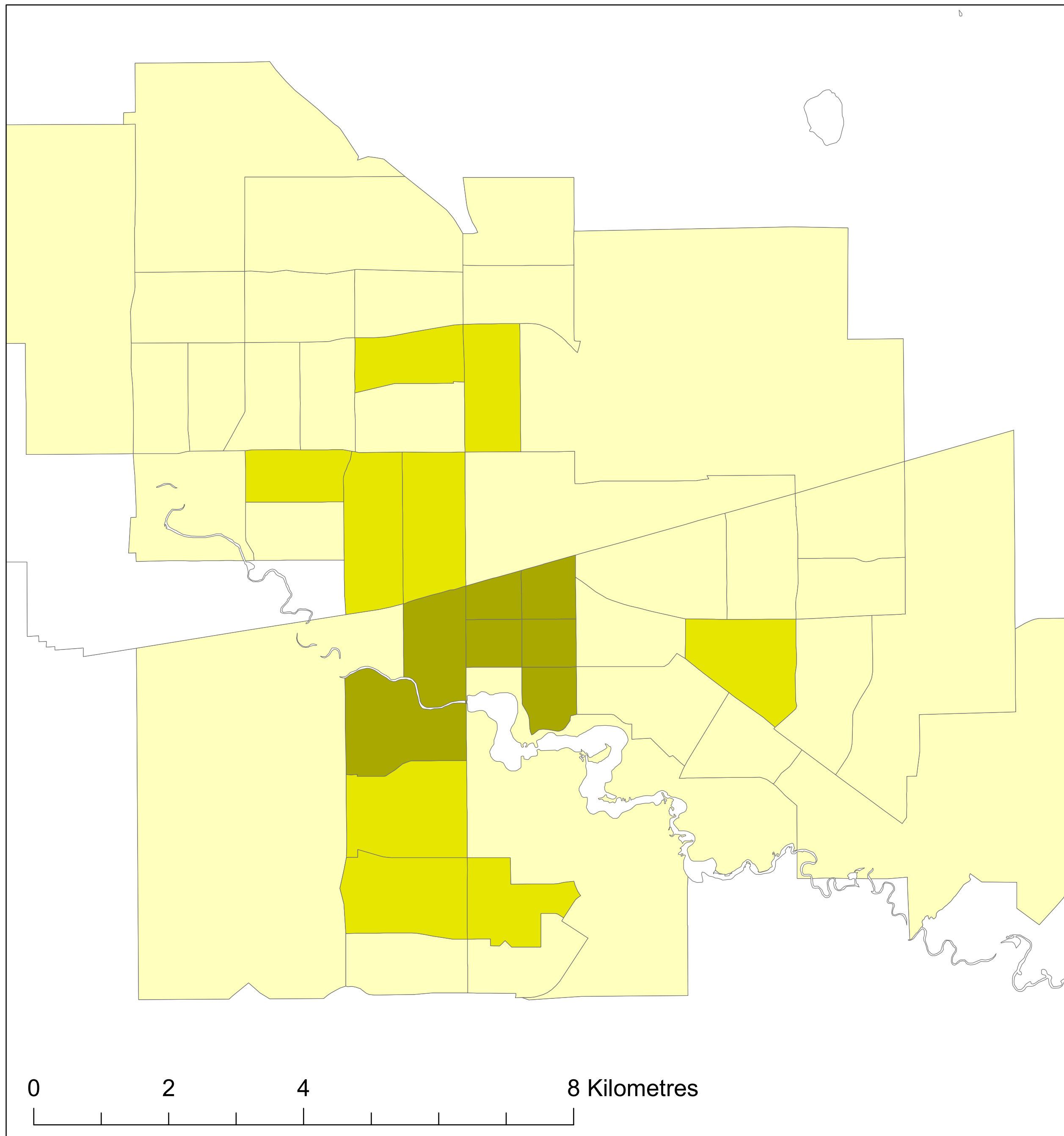
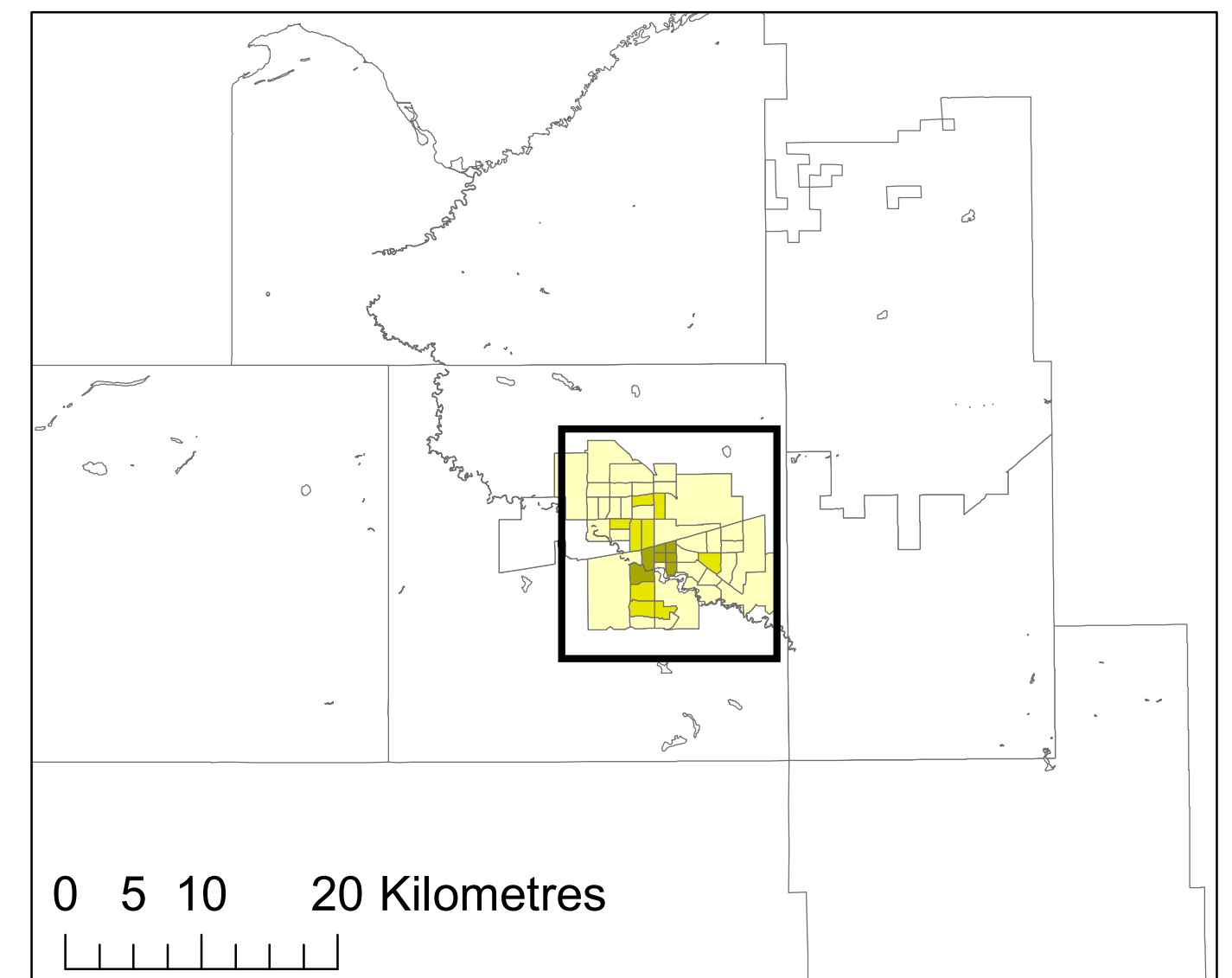
Regina

Transportation T9 Method

Legend

	Active Core	Active Core: 9%
	Transit Suburb	Transit Suburb: 17%
	Auto Suburb	Auto Suburb: 64%
	Exurban	Exurban: 10%

Census Tracts and Population Data: 2016 Census
Census Tract Classification: 2016



Queen's School of Urban and Regional Planning
Principal Investigator: David Gordon
Research Assistants: Chris Willms & Lyra Hindrichs

