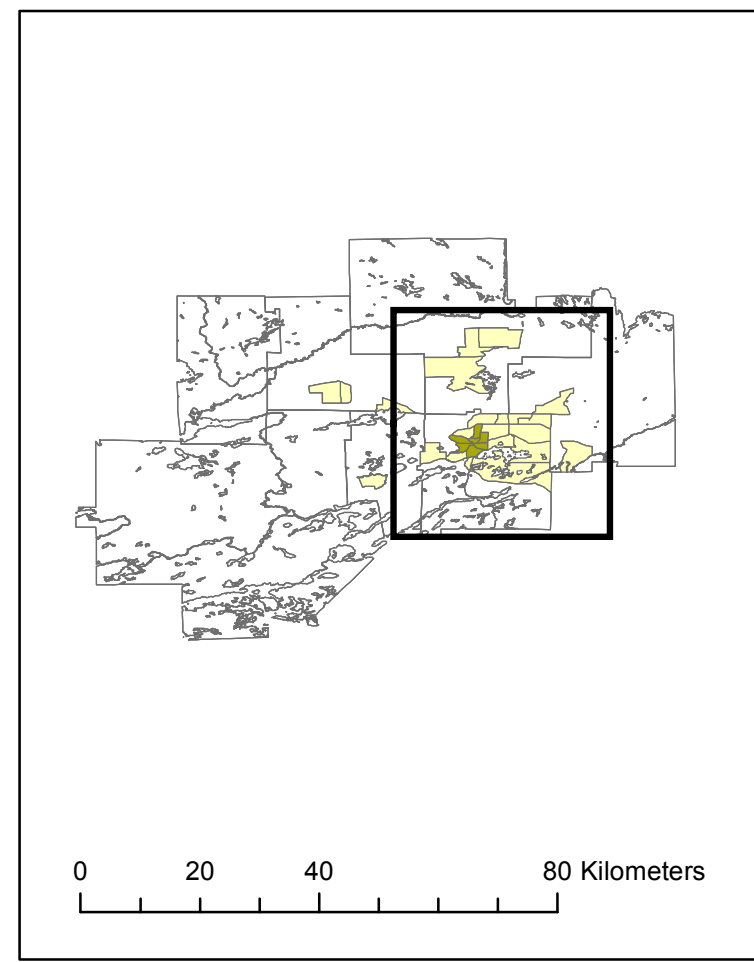
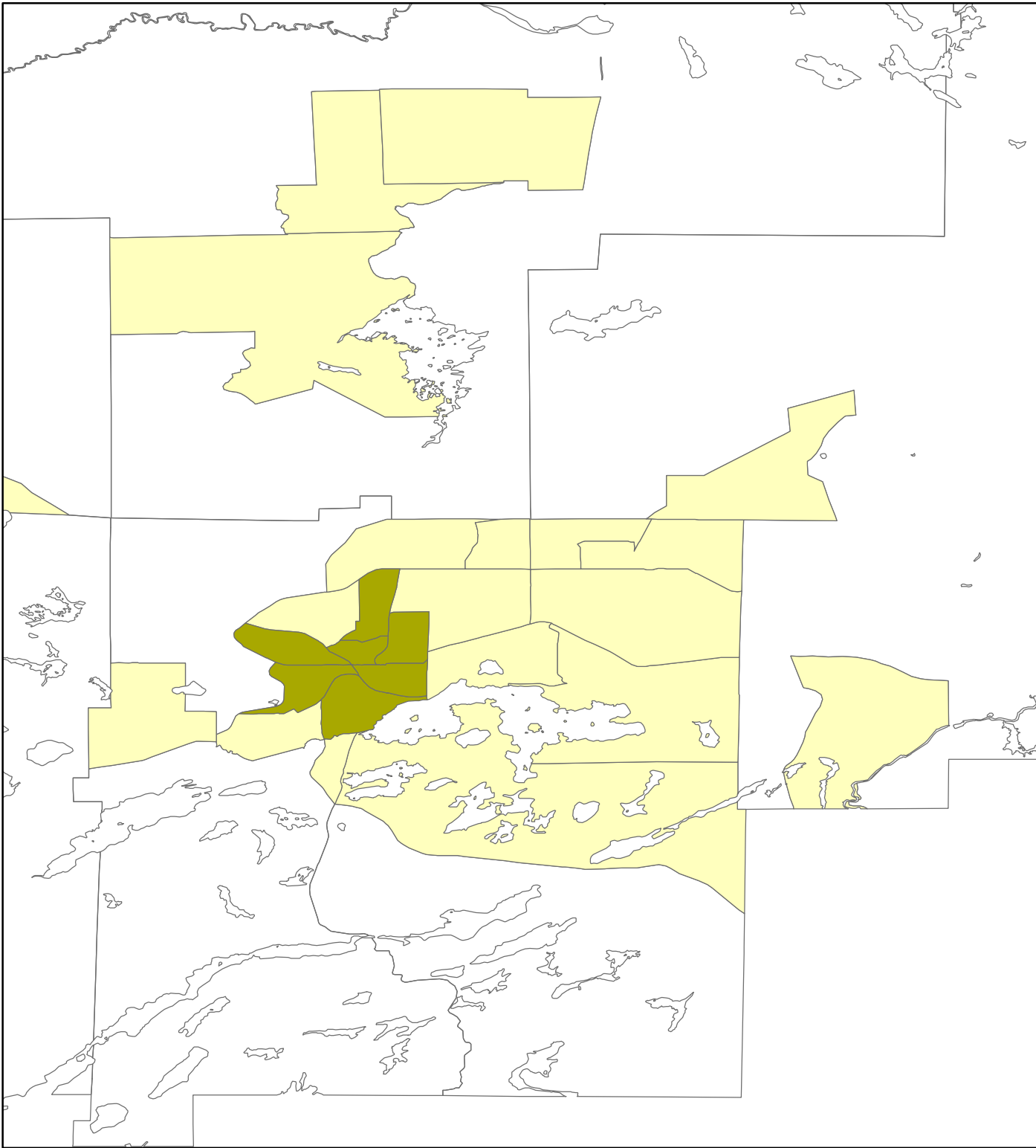


Sudbury

Legend Active Core 18%, Suburban 58%, Exurban 24%

- Active Core
 - Transit Supportive Suburb
 - Auto Suburb
 - Exurban
- Density Method D4
- Statistics Canada | 1996 Census
Benjamin Jean, Research Assistant



Queen's University School of Urban and Regional Planning.
Principal Investigator David Gordon