

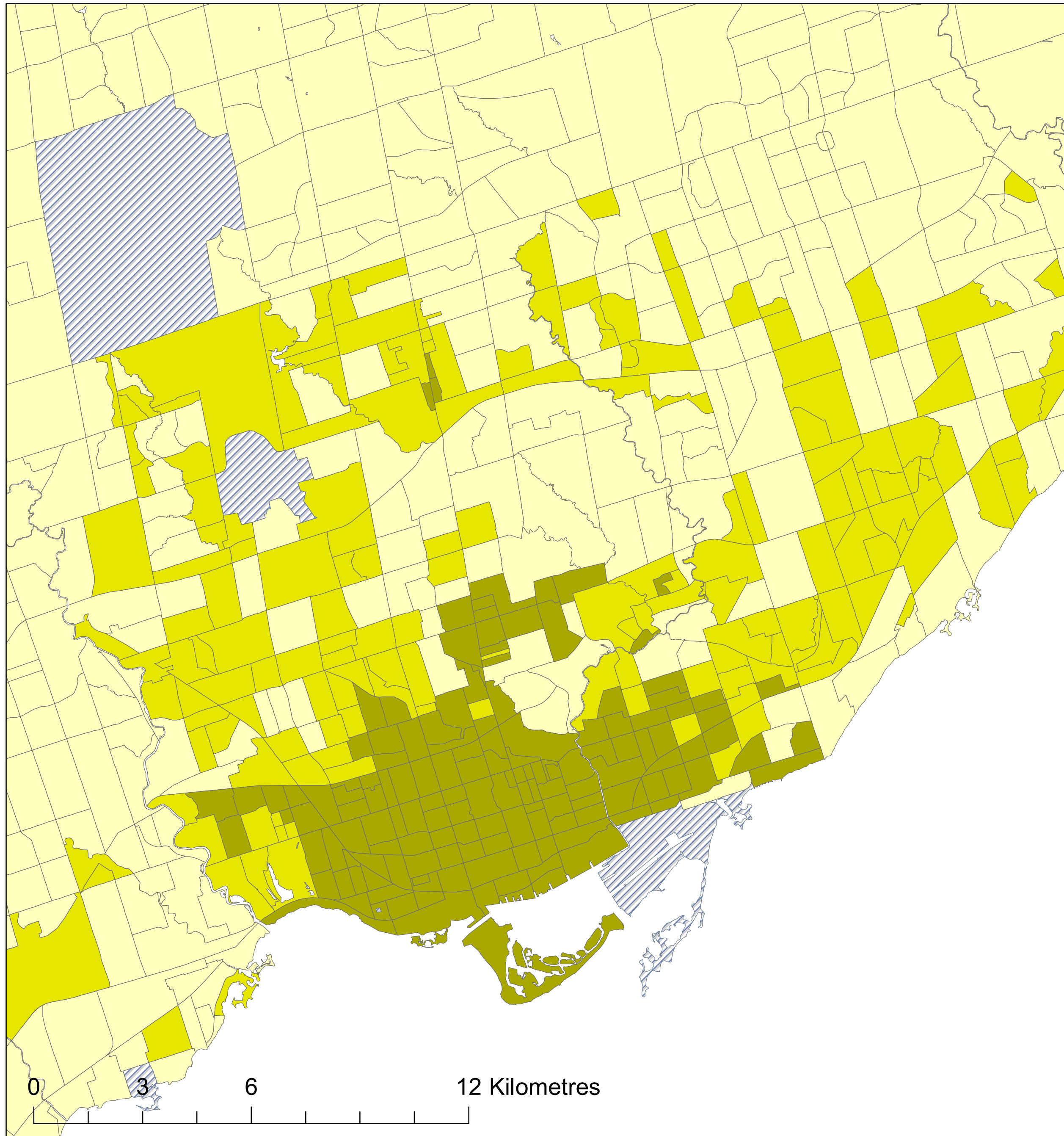
# Toronto

*Transportation T9 Method*

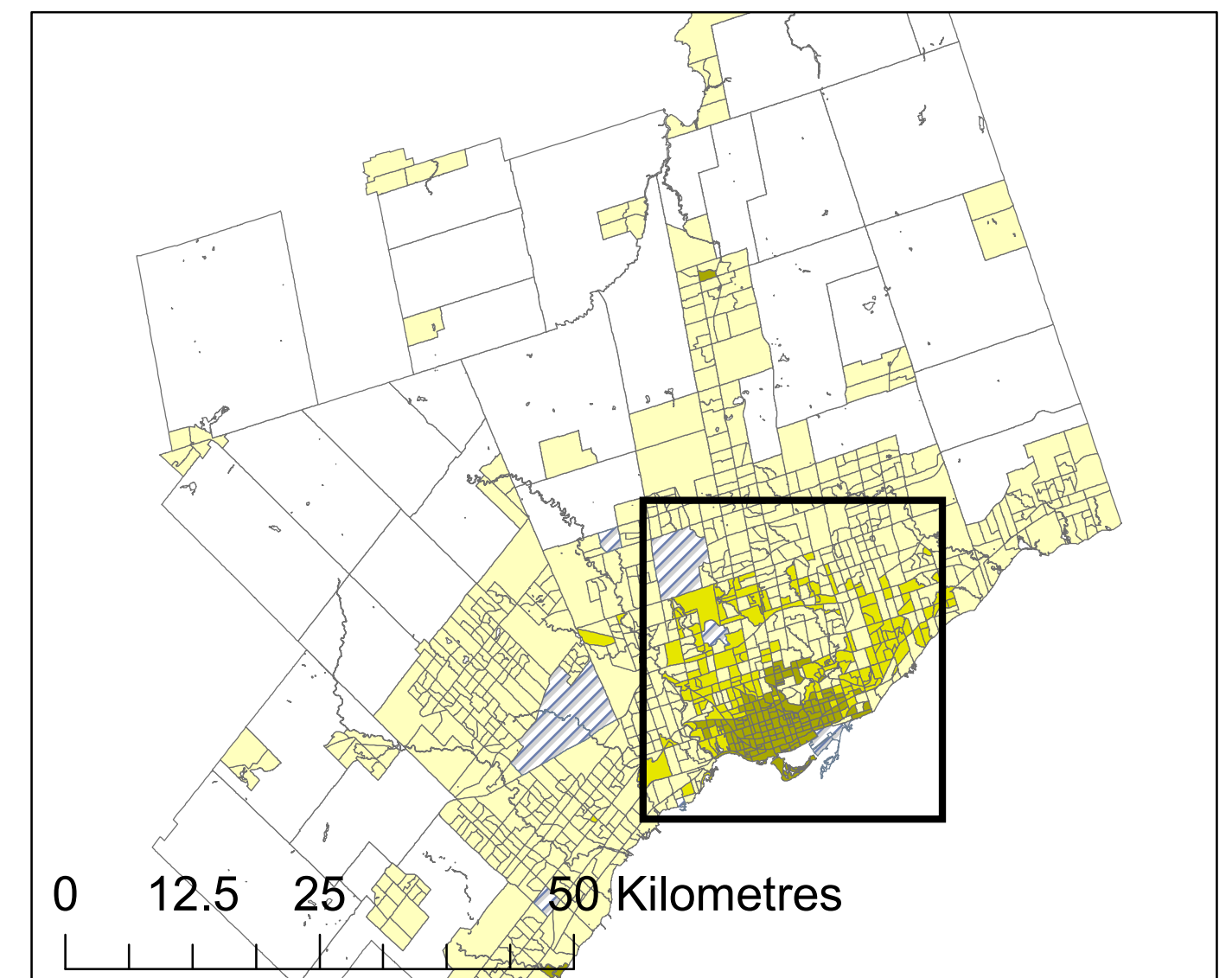
## Legend

- Active Core
- Transit Suburb
- Auto Suburb
- Exurban
- Unclassified

Active Core: 12%  
Transit Suburb: 15%  
Auto Suburb: 70%  
Exurban: 3%



Census Tracts and Population Data: 2016 Census  
Census Tract Classification: 2016



Queen's School of Urban and Regional Planning  
Principal Investigator: David Gordon  
Research Assistants: Chris Willms, Lyra Hindrichs,  
Ben McCauley & Shuhong Lin

