

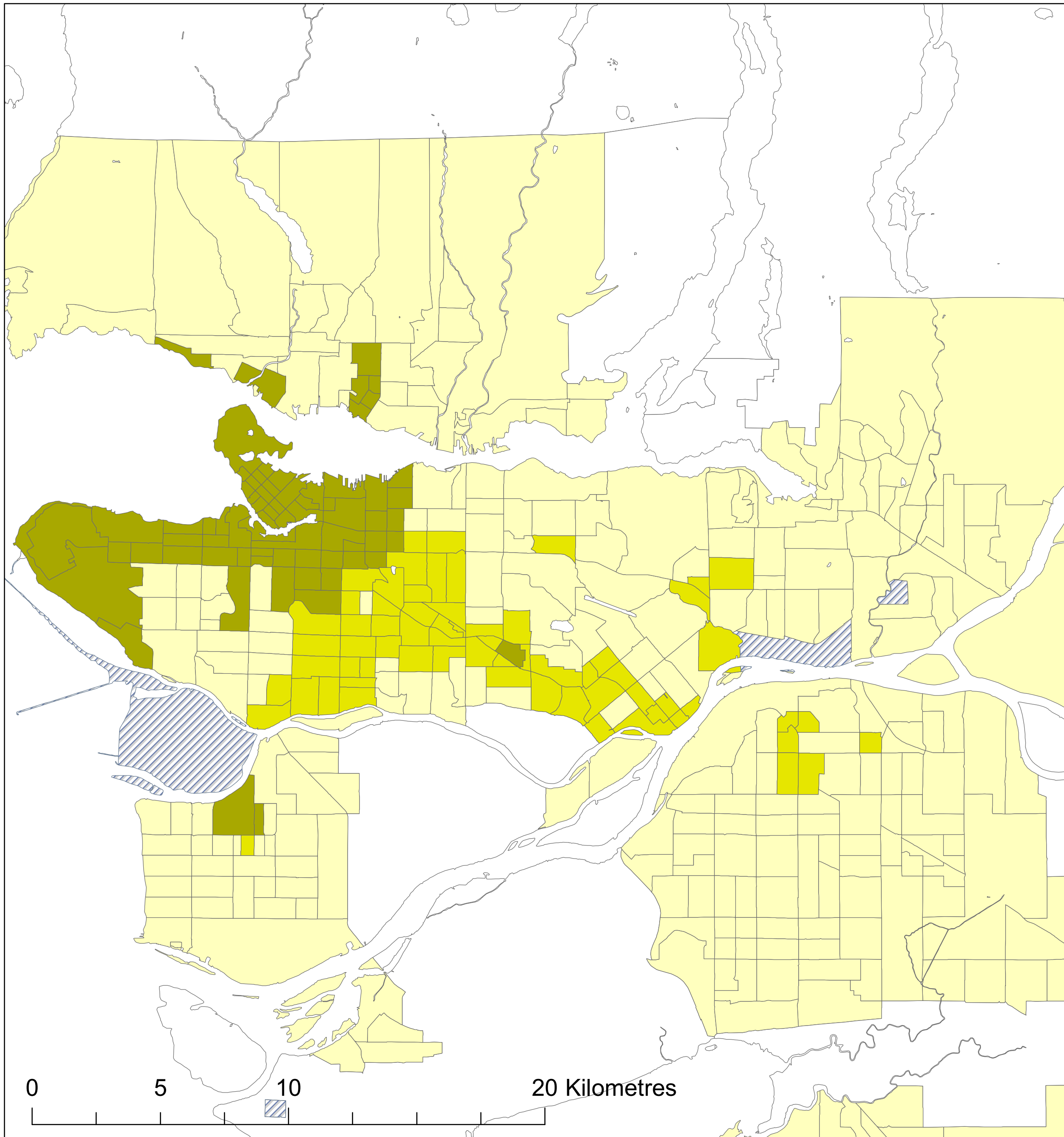
# Vancouver

*Transportation T9 Method*

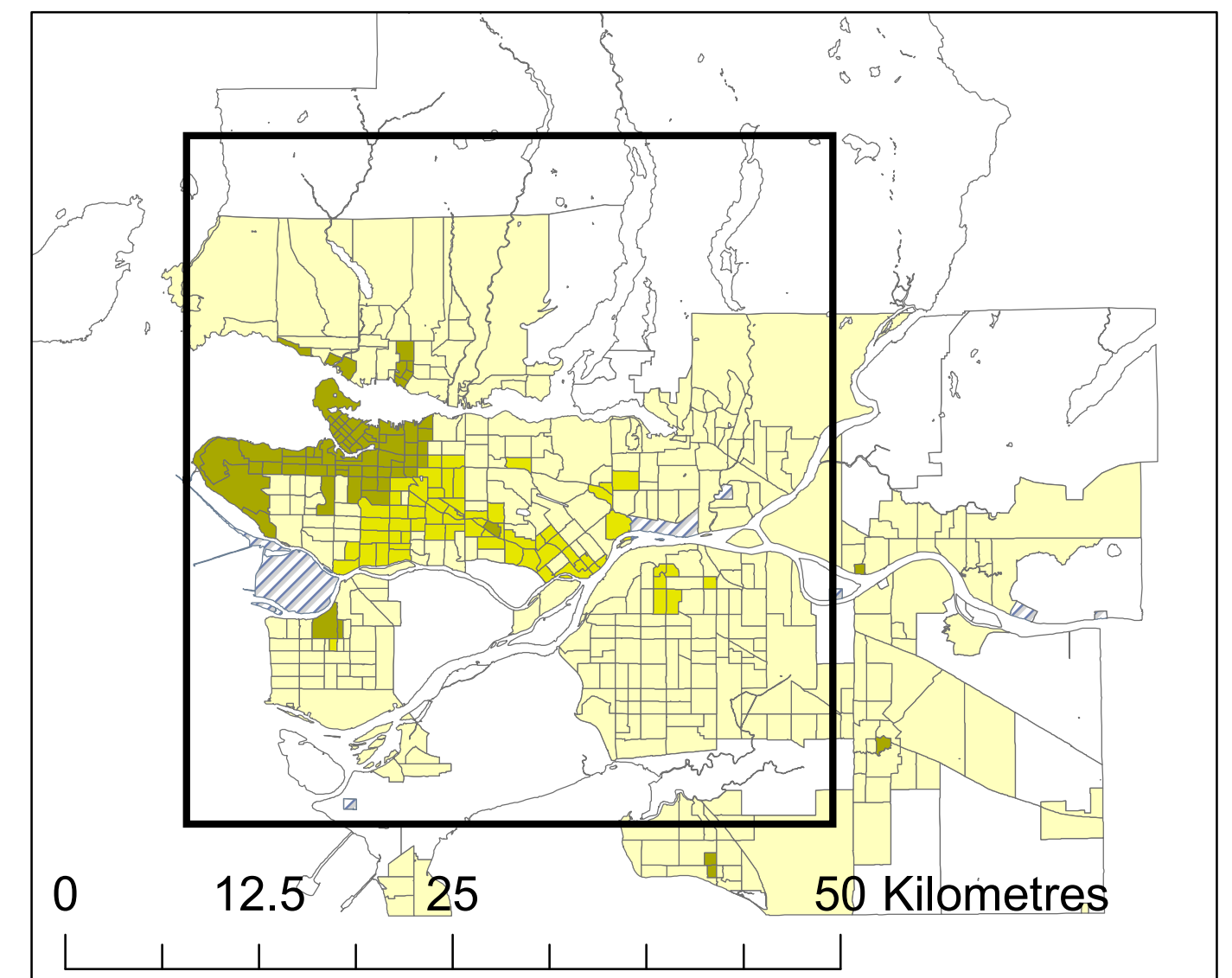
## Legend

- Active Core
- Transit Suburb
- Auto Suburb
- Exurban
- Unclassified

Active Core: 16%  
Transit Suburb: 15%  
Auto Suburb: 67%  
Exurban: 2%



Census Tracts and Population Data: 2016 Census  
Census Tract Classification: 2016



Queen's School of Urban and Regional Planning  
Principal Investigator: David Gordon  
Research Assistants: Lyra Hindrichs, Chris Willms,  
Ben McCauley & Shuhong Lin

