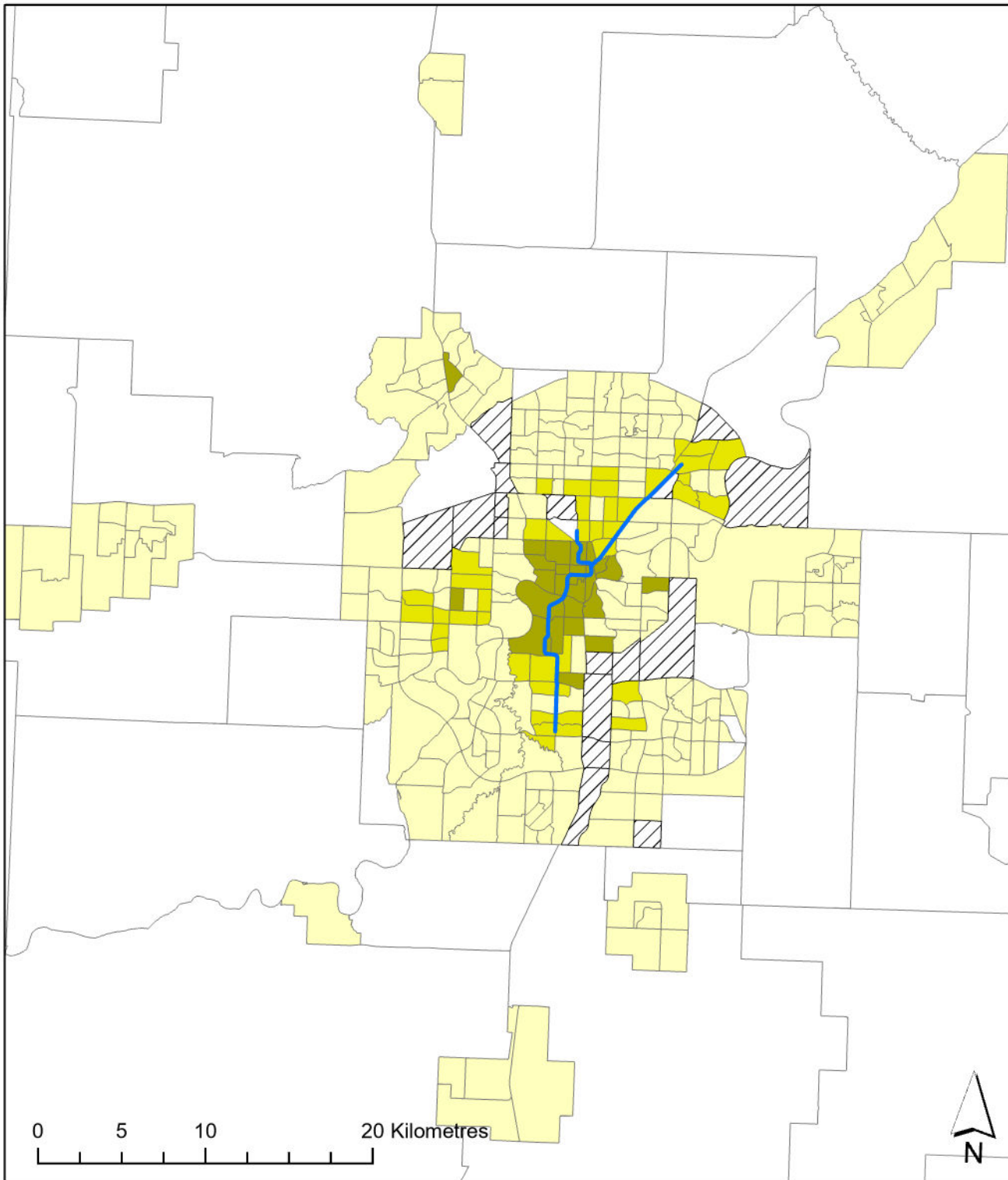


Edmonton 2021

Transportation T9 Method



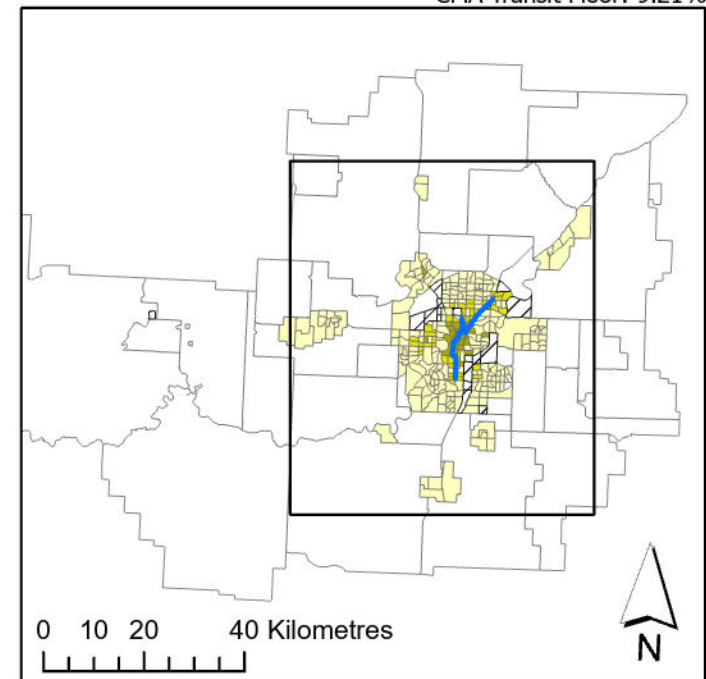
Legend

- Active Core
- Transit Suburb
- Auto Suburb
- Exurban
- Unclassified
- Edmonton LRT

Population %

Active Core:	7%
Transit Suburb:	12%
Auto Suburb:	72%
Exurban:	9%

Census Tracts and Population Data: 2021 Census
Census Tract Classification: Adjusted 2016
CMA Active Transport Floor: 9.26%
CMA Transit Floor: 9.21%



Queen's University School of Urban and Regional Planning
University of Toronto School of Cities
Toronto Metropolitan University School of Urban and Regional Planning
Principal Investigator: David Gordon
Research Assistants: Sarah MacKinnon, Irene Chang, Matthew Field, Remus Herteg, Jan Li, Alex Miller, Huddah Nawaz, Riya Shah