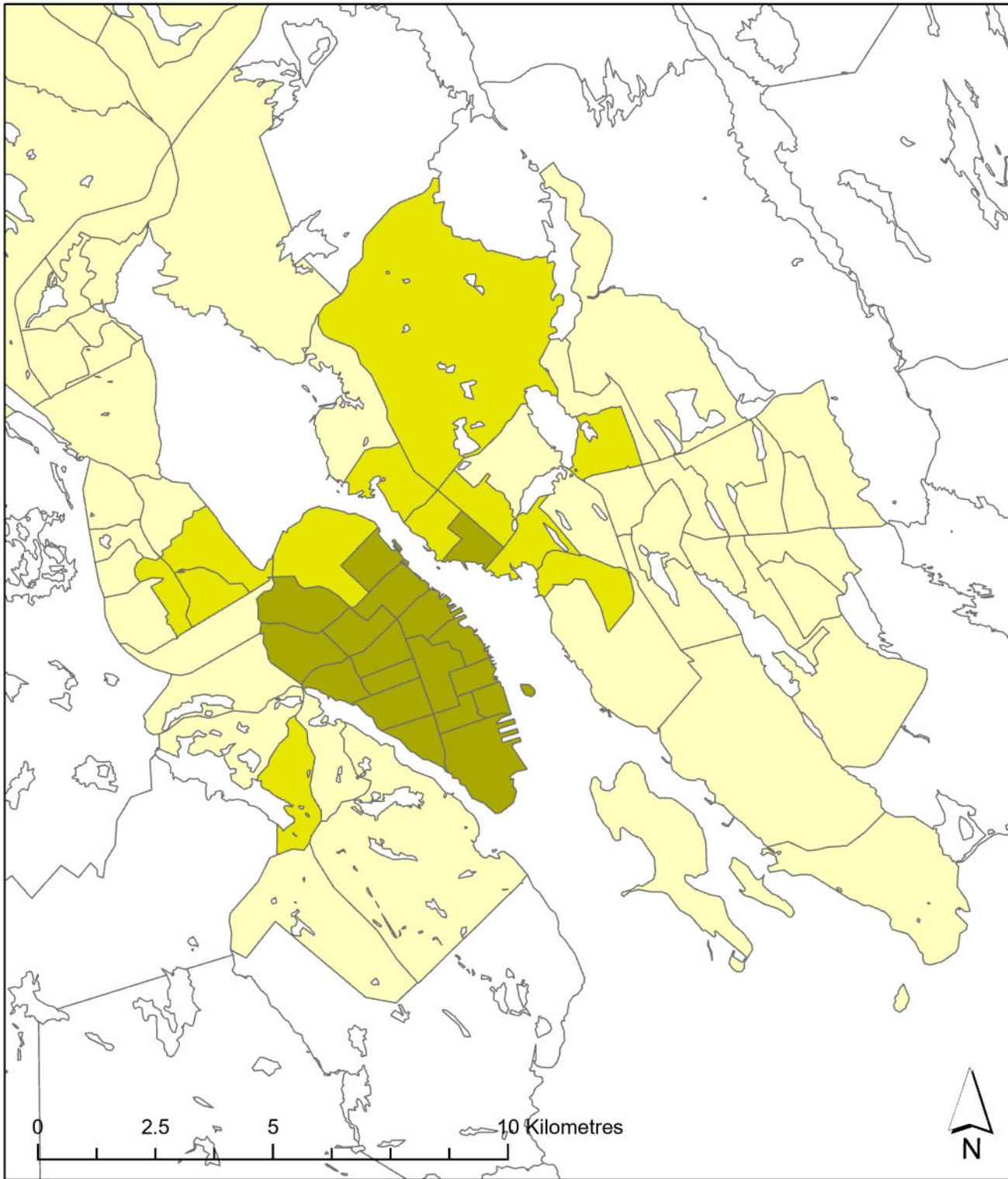


# Halifax 2021

Transportation T9 Method



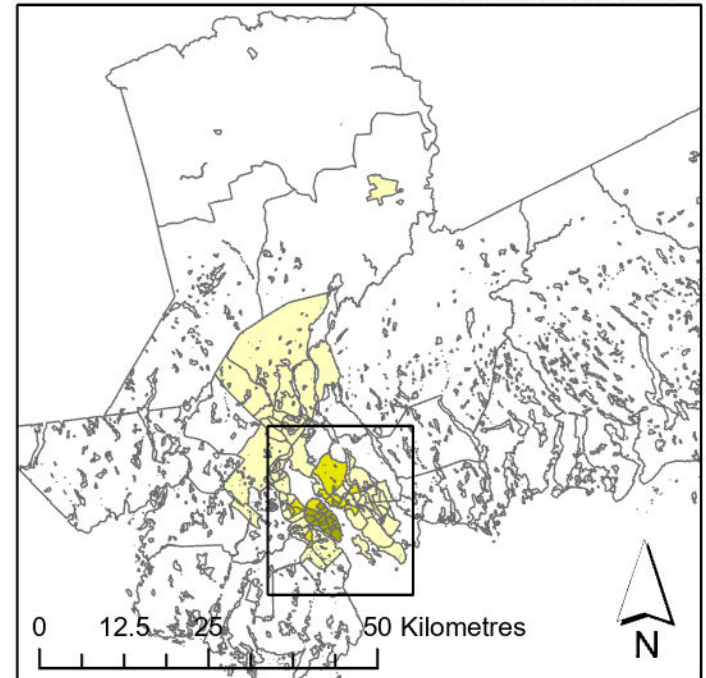
## Legend

- Active Core
- Transit Suburb
- Auto Suburb
- Exurban
- Unclassified

## Population %

- Active Core: 15%
- Transit Suburb: 12%
- Auto Suburb: 49%
- Exurban: 24%

Census Tracts and Population Data: 2021 Census  
 Census Tract Classification: Adjusted 2016  
 CMA Active Transport Floor: 11.40%  
 CMA Transit Floor: 11.55%



Queen's University School of Urban and Regional Planning  
 University of Toronto School of Cities  
 Toronto Metropolitan University School of Urban and Regional Planning  
 Principal Investigator: David Gordon  
 Research Assistants: Sarah MacKinnon, Irene Chang, Matthew Field,  
 Remus Herteg, Jan Li, Alex Miller, Huddah Nawaz, Riya Shah