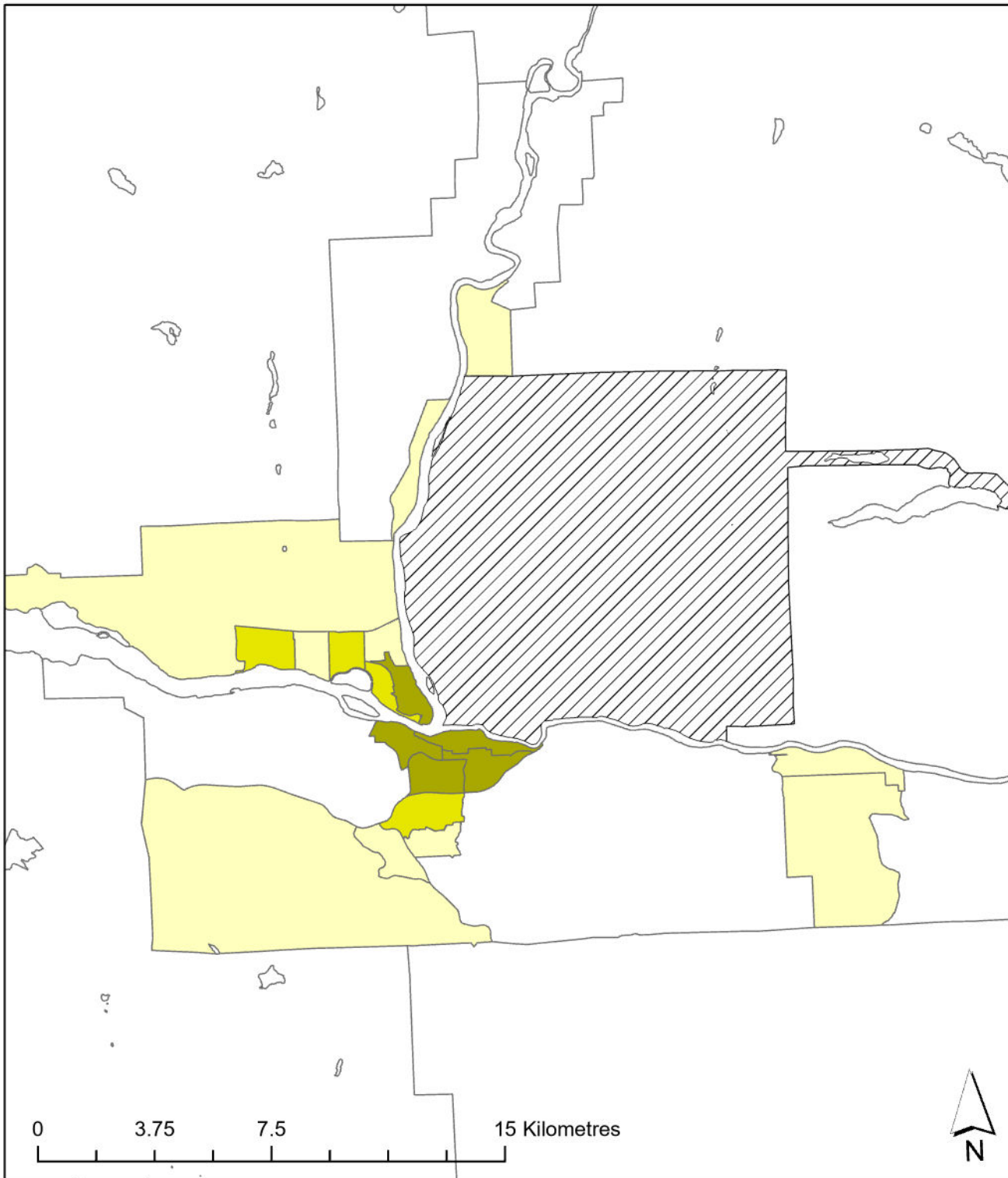


# Kamloops 2021

*Transportation T9 Method*



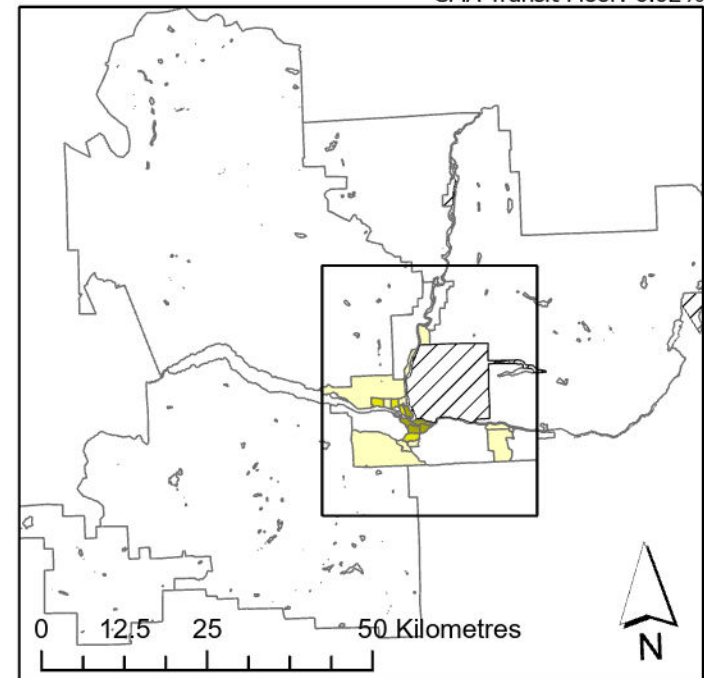
## Legend

- Active Core
- Transit Suburb
- Auto Suburb
- Exurban
- Unclassified

## Population %

Active Core:	18%
Transit Suburb:	16%
Auto Suburb:	37%
Exurban:	25%

Census Tracts and Population Data: 2021 Census  
 Census Tract Classification: Adjusted 2016  
 CMA Active Transport Floor: 9.26%  
 CMA Transit Floor: 6.02%



Queen's University School of Urban and Regional Planning  
 University of Toronto School of Cities  
 Toronto Metropolitan University School of Urban and Regional Planning  
 Principal Investigator: David Gordon  
 Research Assistants: Sarah MacKinnon, Irene Chang, Matthew Field,  
 Remus Herteg, Jan Li, Alex Miller, Huddah Nawaz, Riya Shah