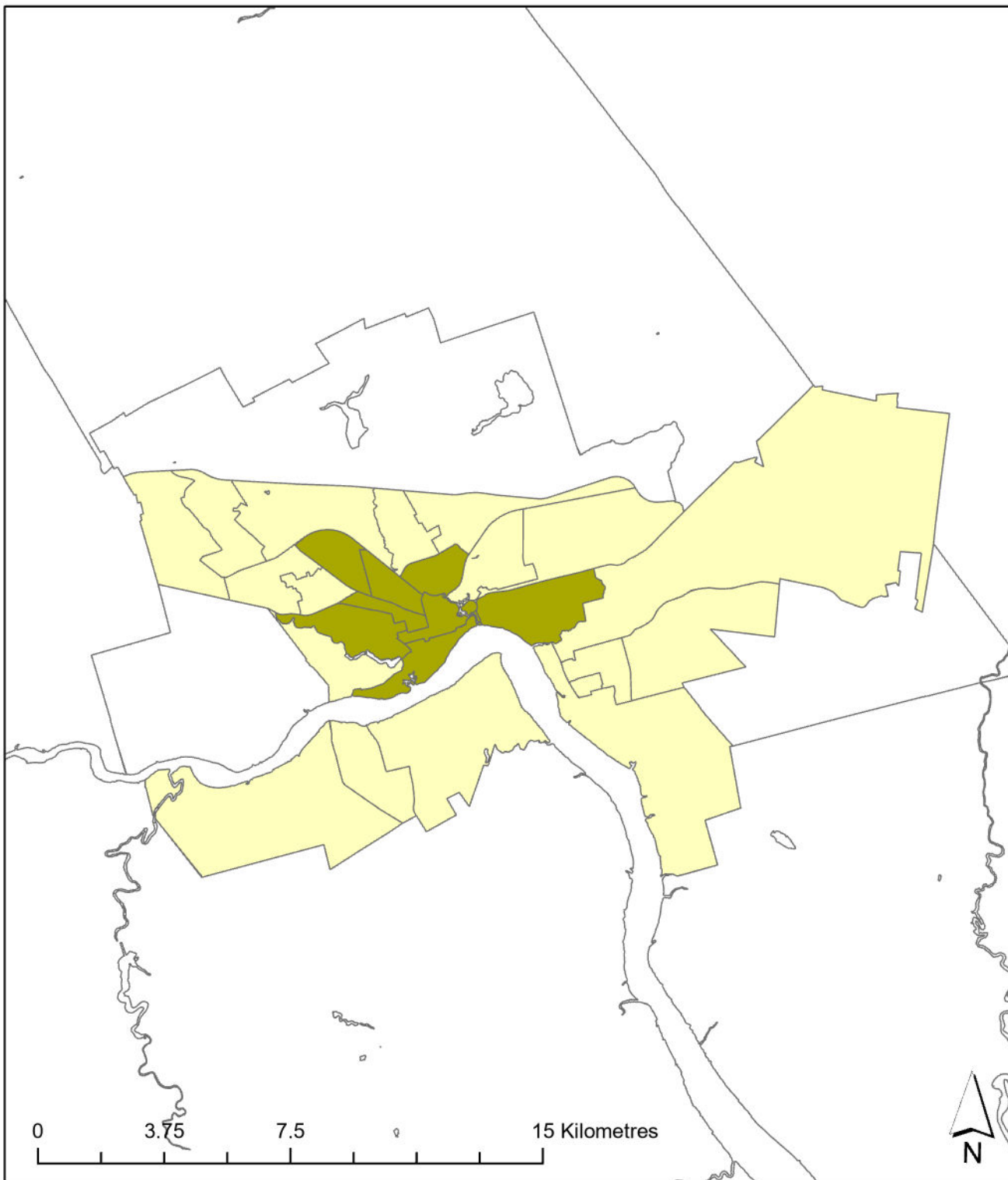


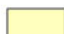

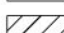


Moncton 2021

Transportation T9 Method



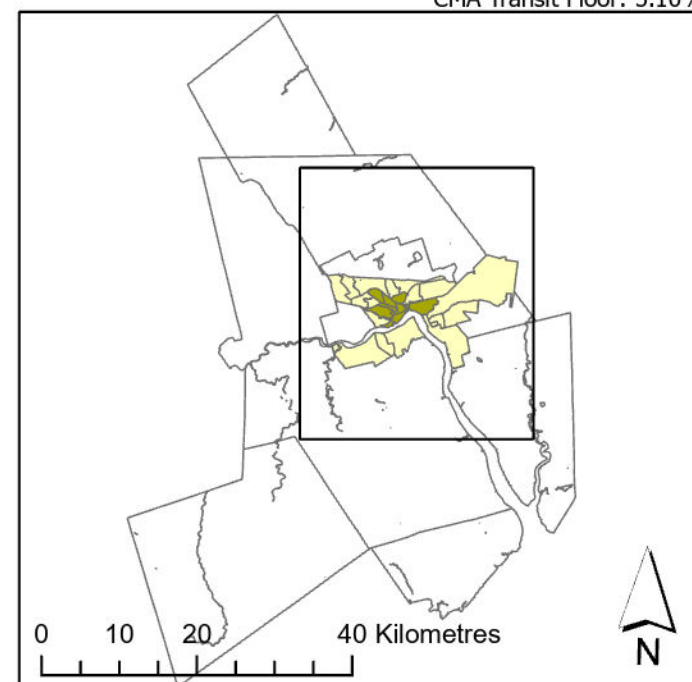
Legend

-  Active Core
-  Transit Suburb
-  Auto Suburb
-  Exurban
-  Unclassified

Population %

- Active Core: 20%
- Transit Suburb: 0%
- Auto Suburb: 57%
- Exurban: 23%

Census Tracts and Population Data: 2021 Census
Census Tract Classification: Adjusted 2016
CMA Active Transport Floor: 9.26%
CMA Transit Floor: 5.10%



Queen's University School of Urban and Regional Planning
University of Toronto School of Cities
Toronto Metropolitan University School of Urban and Regional Planning
Principal Investigator: David Gordon
Research Assistants: Sarah MacKinnon, Irene Chang, Matthew Field,
Remus Herteg, Jan Li, Alex Miller, Huddah Nawaz, Riya Shah