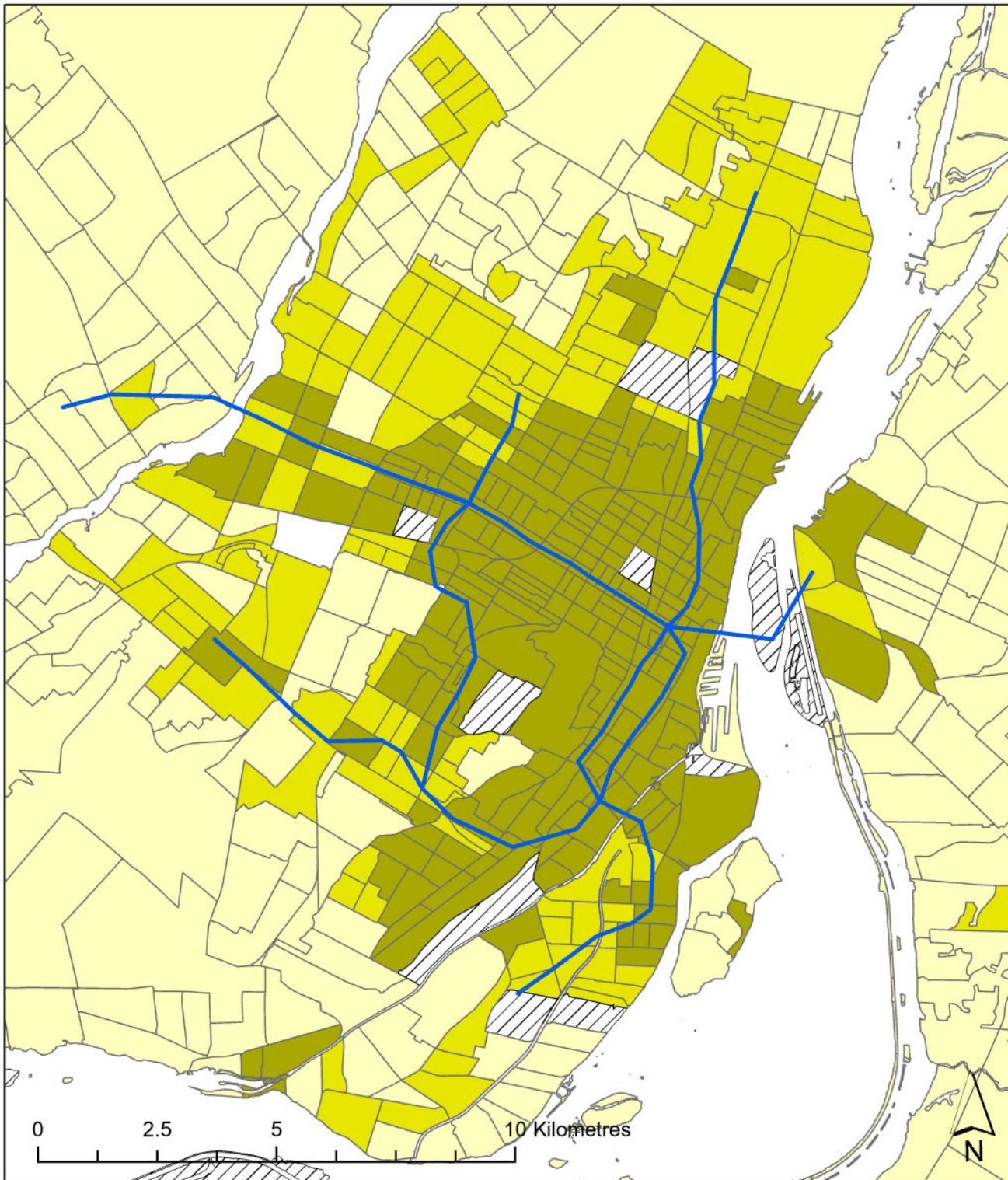


Montréal 2021

Transportation T9 Method



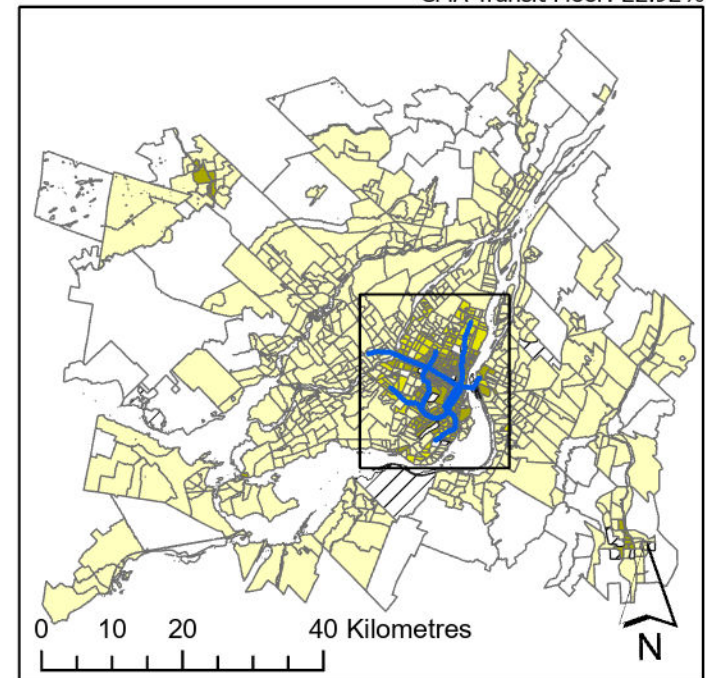
Legend

- Active Core
- Transit Suburb
- Auto Suburb
- Exurban
- Unclassified
- Métro Line

Population %

Active Core:	17%
Transit Suburb:	13%
Auto Suburb:	66%
Exurban:	3%

Census Tracts and Population Data: 2021 Census
 Census Tract Classification: Adjusted 2016
 CMA Active Transport Floor: 11.27%
 CMA Transit Floor: 22.92%



Queen's University School of Urban and Regional Planning
 University of Toronto School of Cities
 Toronto Metropolitan University School of Urban and Regional Planning
 Principal Investigator: David Gordon
 Research Assistants: Sarah MacKinnon, Irene Chang, Matthew Field,
 Remus Herteg, Jan Li, Alex Miller, Huddah Nawaz, Riya Shah