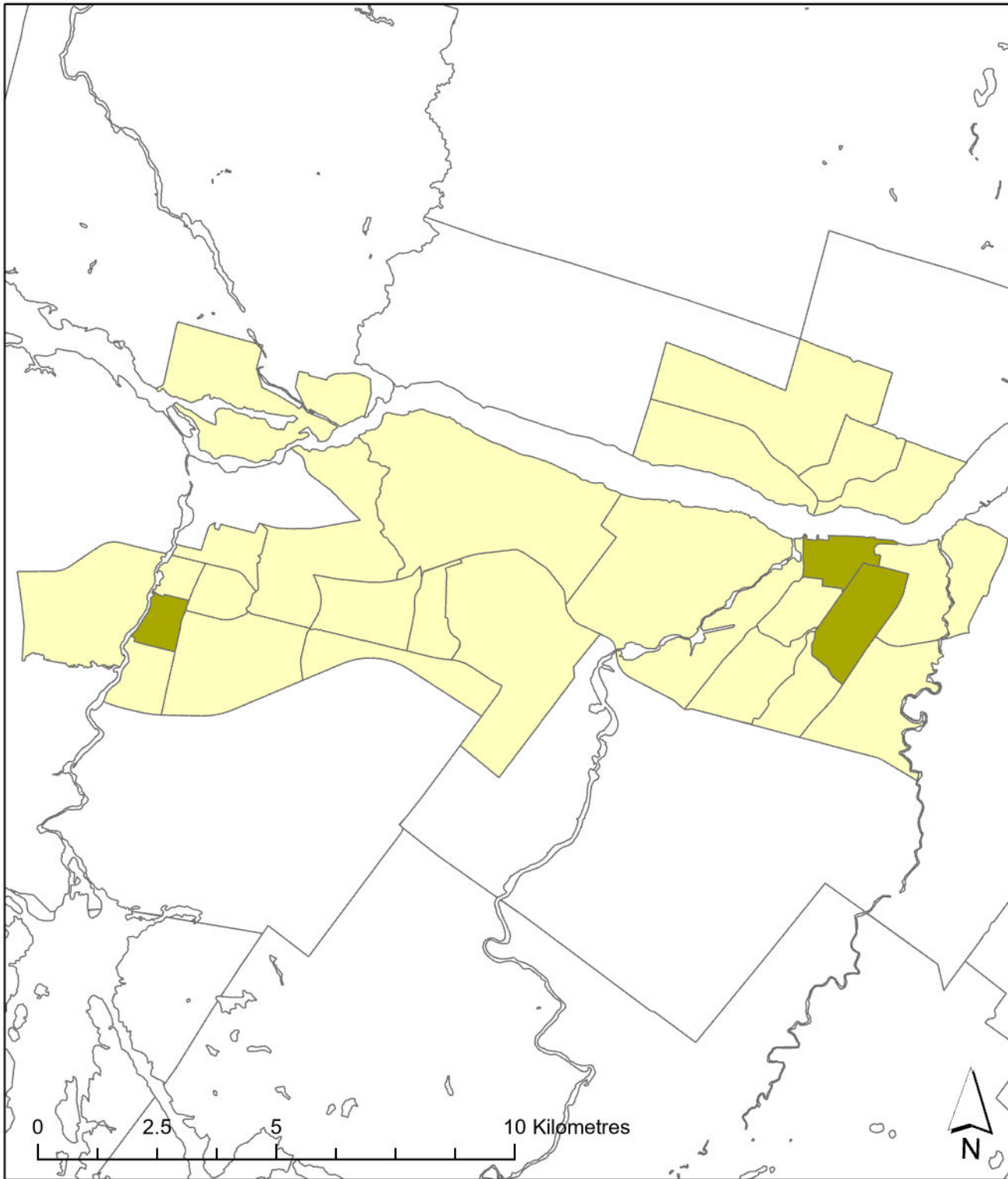


Saguenay 2021

Transportation T9 Method



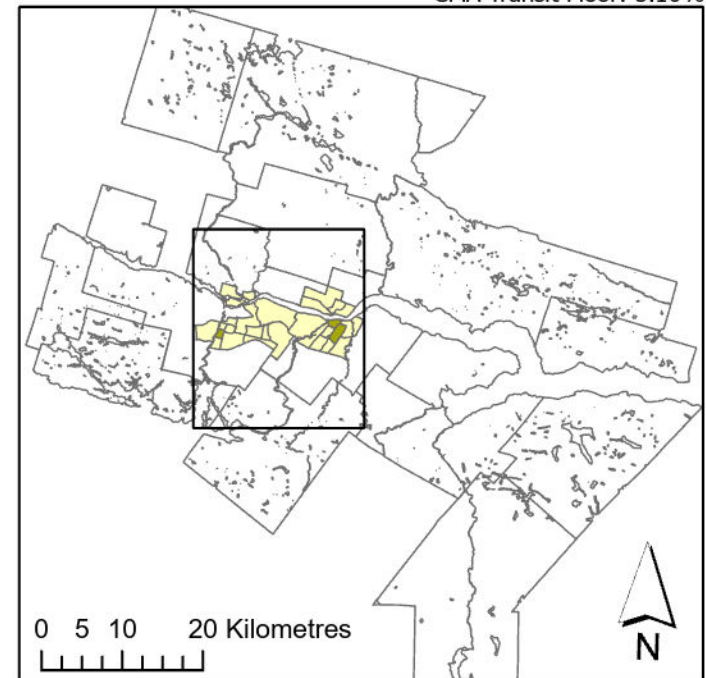
Legend

- Active Core
- Transit Suburb
- Auto Suburb
- Exurban
- Unclassified

Population %

- Active Core: 6%
- Transit Suburb: 0%
- Auto Suburb: 55%
- Exurban: 39%

Census Tracts and Population Data: 2021 Census
 Census Tract Classification: Adjusted 2016
 CMA Active Transport Floor: 9.26%
 CMA Transit Floor: 5.10%



Queen's University School of Urban and Regional Planning
 University of Toronto School of Cities
 Toronto Metropolitan University School of Urban and Regional Planning
 Principal Investigator: David Gordon
 Research Assistants: Sarah MacKinnon, Irene Chang, Matthew Field,
 Remus Herteg, Jan Li, Alex Miller, Huddah Nawaz, Riya Shah