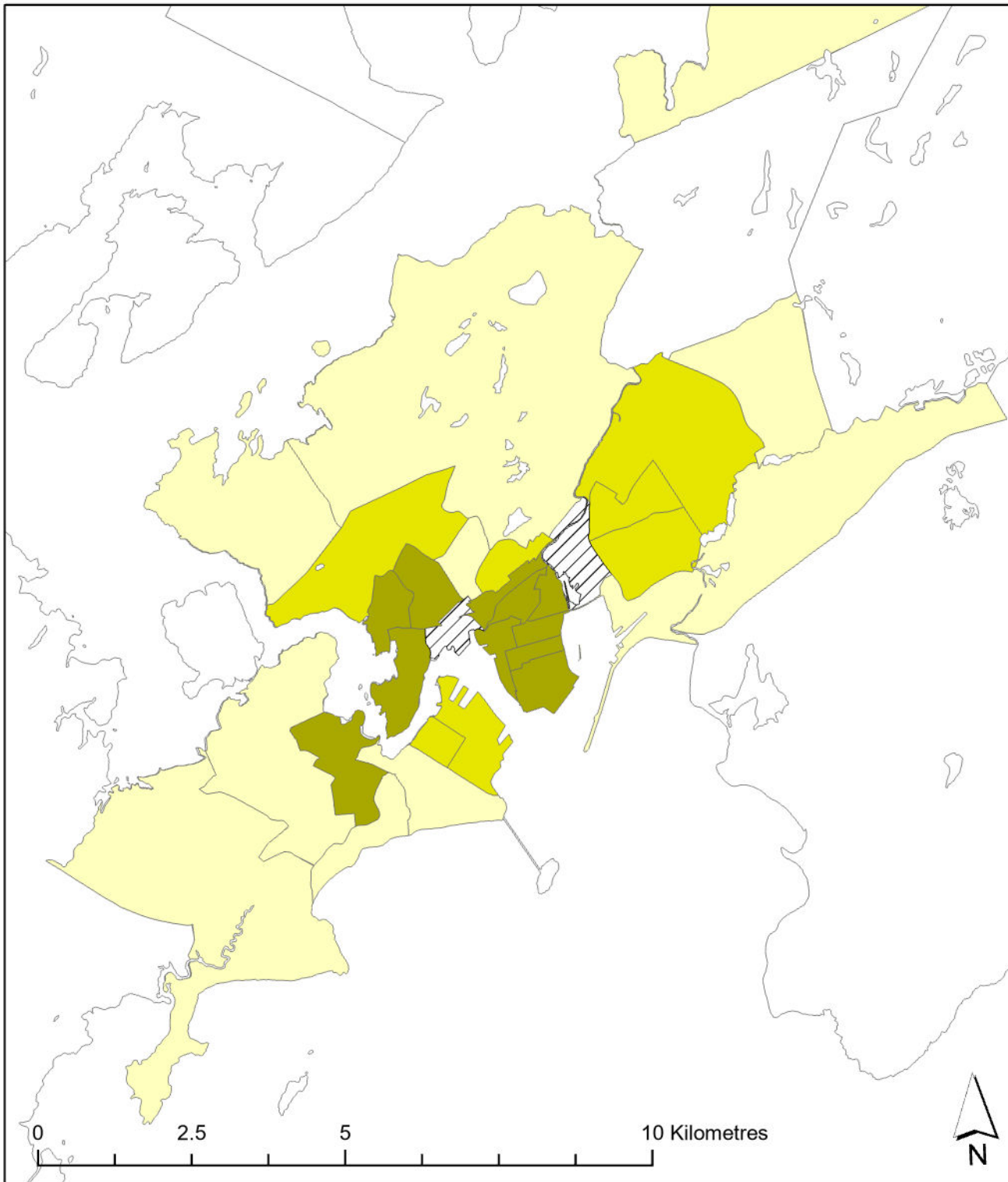


# Saint John 2021

Transportation T9 Method



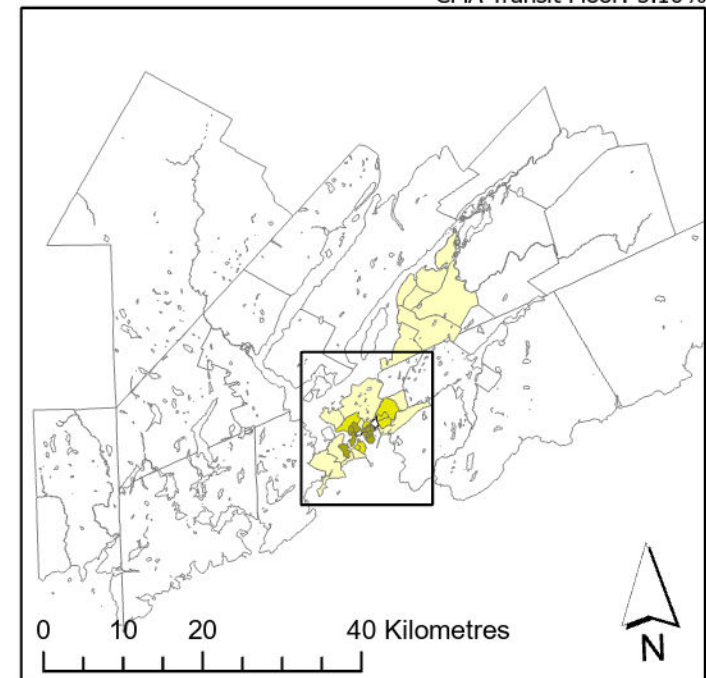
## Legend

- Active Core
- Transit Suburb
- Auto Suburb
- Exurban
- Unclassified

## Population %

- Active Core: 12%
- Transit Suburb: 10%
- Auto Suburb: 44%
- Exurban: 34%

Census Tracts and Population Data: 2021 Census  
Census Tract Classification: Adjusted 2016  
CMA Active Transport Floor: 9.26%  
CMA Transit Floor: 5.10%



Queen's University School of Urban and Regional Planning  
University of Toronto School of Cities  
Toronto Metropolitan University School of Urban and Regional Planning  
Principal Investigator: David Gordon  
Research Assistants: Sarah MacKinnon, Irene Chang, Matthew Field,  
Remus Herteg, Jan Li, Alex Miller, Huddah Nawaz, Riya Shah