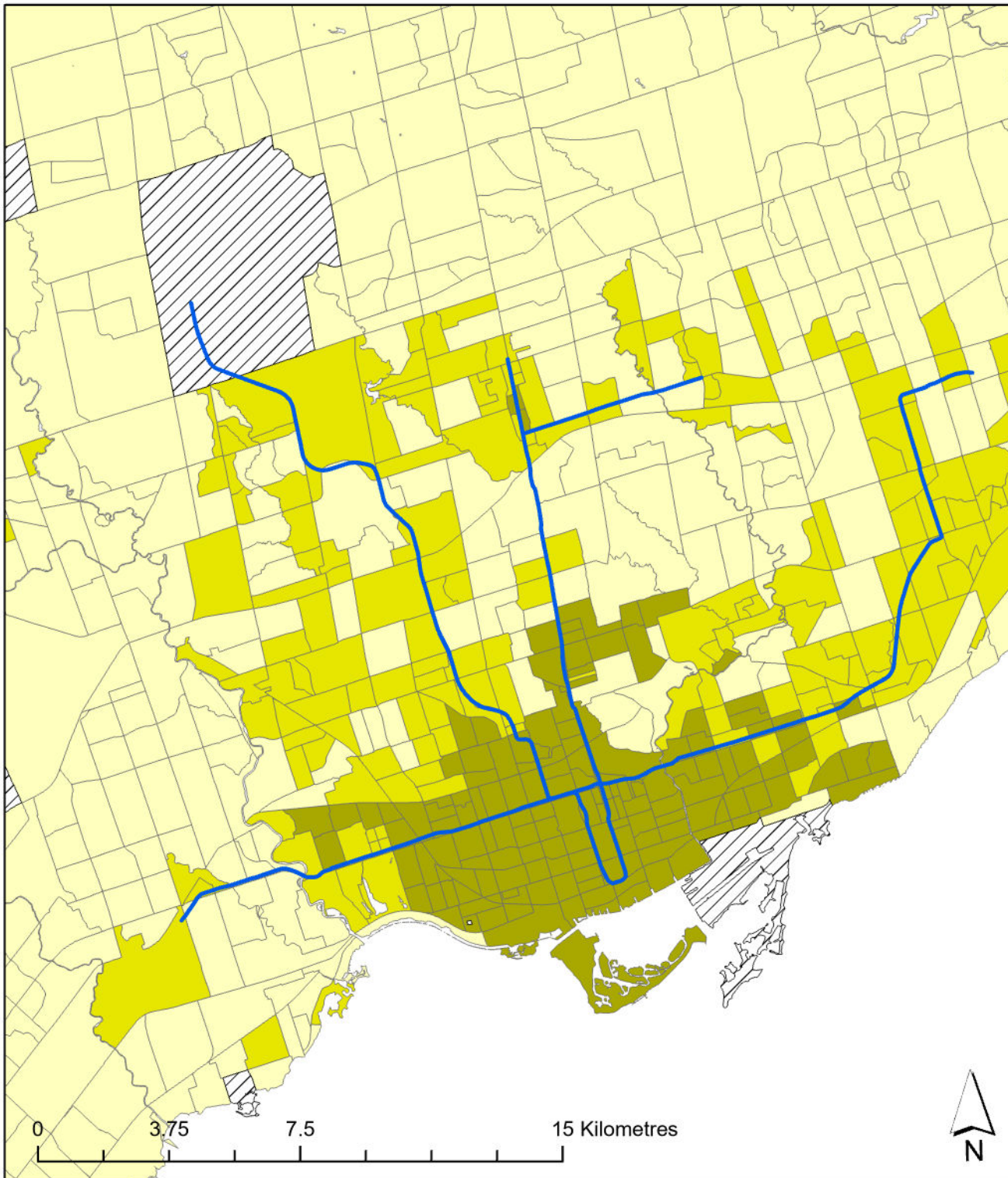


# Toronto 2021

## Transportation T9 Method



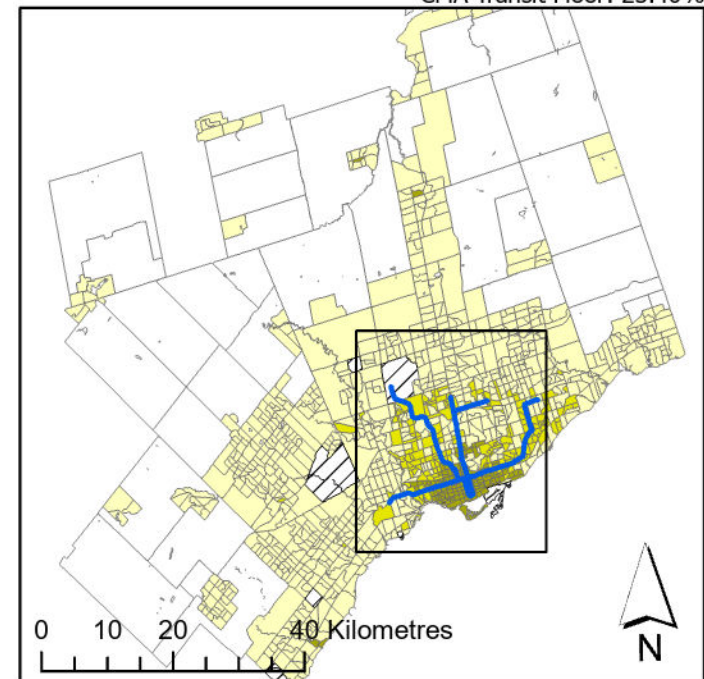
### Legend

- Active Core
- Transit Suburb
- Auto Suburb
- Exurban
- Unclassified
- TTC Subway Line

### Population %

Active Core:	12%
Transit Suburb:	15%
Auto Suburb:	70%
Exurban:	3%

Census Tracts and Population Data: 2021 Census  
 Census Tract Classification: Adjusted 2016  
 CMA Active Transport Floor: 9.26%  
 CMA Transit Floor: 23.40%



Queen's University School of Urban and Regional Planning  
 University of Toronto School of Cities  
 Toronto Metropolitan University School of Urban and Regional Planning  
 Principal Investigator: David Gordon  
 Research Assistants: Sarah MacKinnon, Irene Chang, Matthew Field,  
 Remus Herteg, Jan Li, Alex Miller, Huddah Nawaz, Riya Shah