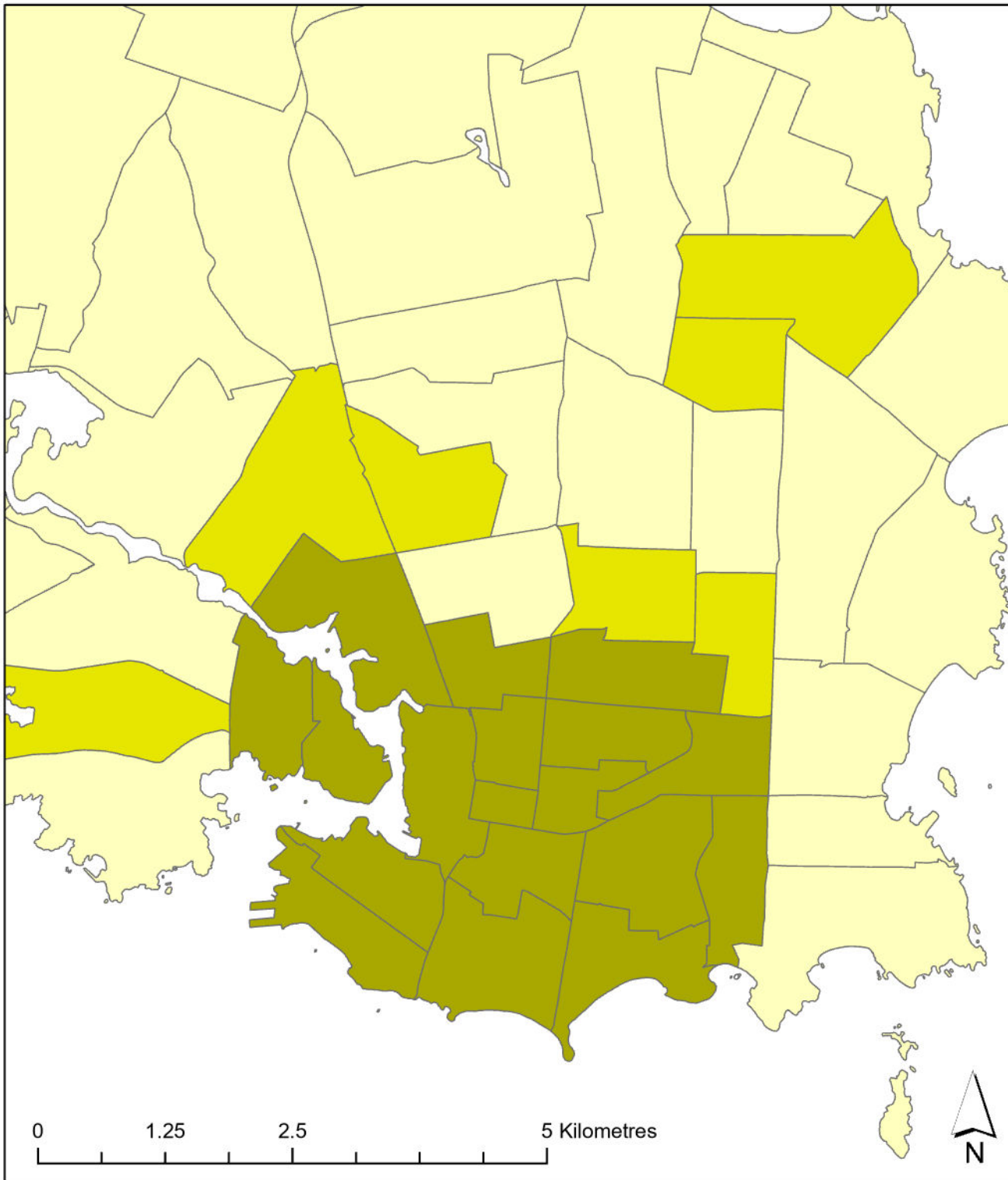


Victoria 2021

Transportation T9 Method



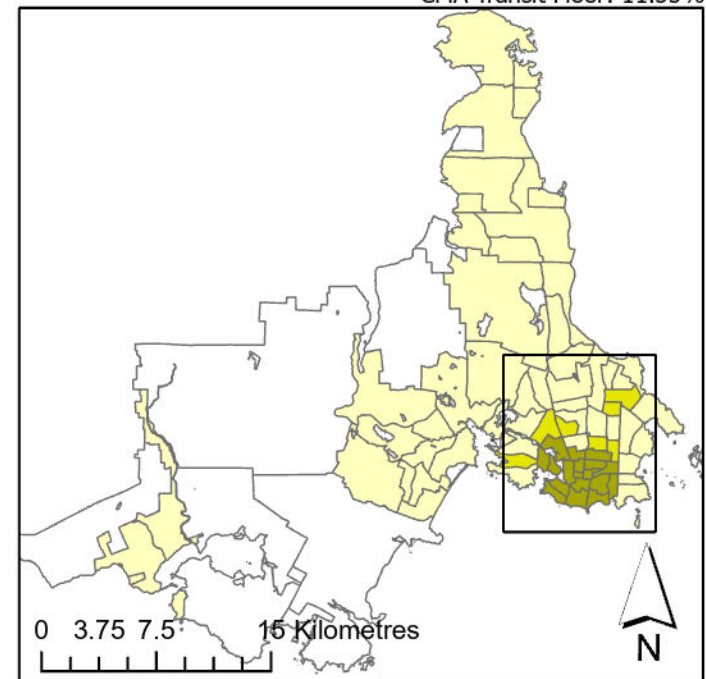
Legend

- Active Core
- Transit Suburb
- Auto Suburb
- Exurban
- Unclassified

Population %

- Active Core: 21%
- Transit Suburb: 9%
- Auto Suburb: 66%
- Exurban: 4%

Census Tracts and Population Data: 2021 Census
Census Tract Classification: Adjusted 2016
CMA Active Transport Floor: 23.01%
CMA Transit Floor: 11.55%



Queen's University School of Urban and Regional Planning
University of Toronto School of Cities
Toronto Metropolitan University School of Urban and Regional Planning
Principal Investigator: David Gordon
Research Assistants: Sarah MacKinnon, Irene Chang, Matthew Field,
Remus Herteg, Jan Li, Alex Miller, Huddah Nawaz, Riya Shah